



Case Study Submission Requirements: Gynecologic Ultrasound with Adjunct Competence in 3D

➤ Refer to the *Accreditation Application Manual* for [additional case study submission requirements](#).

Only case studies with an ultrasound indication, per practice parameters, will be accepted. (Non-indicated exams will not be accepted.)

Cases in which a patient has had a hysterectomy or oophorectomy are not acceptable for submission.

[Click to Download GYN Case Study Templates for PowerPoint](#)

Applying for GYN with 3D

(may be used to fulfill standard GYN case study requirement)

- **From the main site:** submit 4 complete standard TRANSVAGINAL gynecologic cases with their corresponding final reports which include a demonstration and interpretation of the additional images referenced below*
- **From each additional site or mobile unit:** submit 1 complete standard TRANSVAGINAL gynecologic case with its corresponding final report which includes a demonstration and interpretation of the additional images referenced below*

* [3D Image Requirements & Acquisition/Submission Demonstration](#) (← *click me*)

- **Image 1:** Acquisition image demonstrating the uterus in three orthogonal planes.
- **Image 2:** Reconstructed CORONAL view of the uterus in a single image.

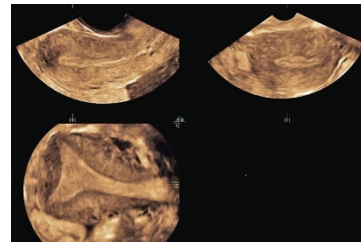
Gynecologic Ultrasound with Adjunct Competence in 3D Imaging Checklist

GYN with 3D

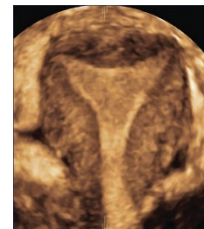
Labeled images of the following:

- 1. Uterus – sufficient images to show orientation and rule out masses and other abnormalities (at least 2 orthogonal planes)
- 2. Uterus measured in 3 dimensions
- 3. Endometrium
- 4. Measurement of endometrium
- 5. Cervix
- 6. Cul-de-sac
- 7. RIGHT ovary measured in 3 dimensions obtained in 2 orthogonal planes
- 8. LEFT ovary measured in 3 dimensions obtained in 2 orthogonal planes

- 9. Acquisition image demonstrating the uterus in 3 orthogonal planes*



- 10. Reconstructed CORONAL view of the uterus in a single image - this view should demonstrate the outer contour of the uterus and the inner endometrial shape*



Changes made to this document since previous version:

7/24/24	added requirement for proper exam indication
5/14/24	added link to Powerpoint case study templates