



Case Study Submission Requirements: Gynecologic Ultrasound

- All cases must follow the [General Requirements for the Submission of Case Studies](#).
- All cases must include a finalized corresponding report. For reporting criteria, refer to the [Documentation Practice Parameter](#).
- For the purpose of accreditation, all anatomy must be appropriately labeled (for example – LONG UT).

Cases in which a patient has had a hysterectomy or oophorectomy are not acceptable for submission.

Applying for standard GYN (without 3D)

- From the **main site**: submit a total of 4 complete standard gynecologic cases with their corresponding final reports, *2 of which must be performed TRANSVAGINALLY*
- From **each additional site** or **mobile unit**: submit 1 complete standard gynecologic case with its corresponding final report

Applying for GYN with 3D Adjunct *(may be used to fulfill GYN case study requirement)*

- From the **main site**: submit 4 complete standard TRANSVAGINAL gynecologic cases with their corresponding final reports which include a demonstration and interpretation of the additional images referenced below*
- From **each additional site** or **mobile unit**: submit 1 complete standard TRANSVAGINAL gynecologic case with its corresponding final report which includes a demonstration and interpretation of the additional images referenced below*

* [3D Image Requirements & Acquisition/Submission Demonstration](#) (*click me*)

- **Image 1**: Acquisition image demonstrating the uterus in three orthogonal planes.
- **Image 2**: Reconstructed CORONAL view of the uterus in a single image.

Gynecologic Ultrasound Imaging Checklist

- **All cases must include a finalized corresponding report.** For reporting criteria, refer to the [Documentation Practice Parameter](#).
- For the purpose of accreditation, all anatomy must be appropriately labeled (for example – LONG UT).

Standard GYN Exam

Labeled images of the following:

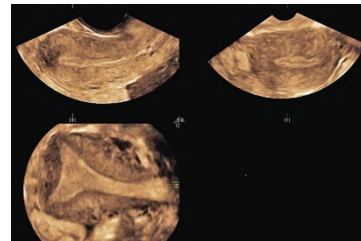
- 1. Uterus – sufficient images to show orientation and rule out masses and other abnormalities (at least 2 orthogonal planes)
- 2. Uterus measured in 3 dimensions
- 3. Endometrium
- 4. Measurement of endometrium
- 5. Cervix
- 6. Cul-de-sac
- 7. RIGHT ovary measured in 3 dimensions obtained in 2 orthogonal planes
- 8. LEFT ovary measured in 3 dimensions obtained in 2 orthogonal planes

If applying for GYN with 3D Adjunct, perform the standard GYN exam (above) and include:

Refer to the [3D Image Requirements & Acquisition/Submission Demonstration](#) (*click me*)

Labeled images of the following:

- 9. Acquisition image demonstrating the uterus in 3 orthogonal planes



- 10. Reconstructed CORONAL view of the uterus in a single image - this view should demonstrate the outer contour of the uterus and the inner endometrial shape

