



Case Study Submission Requirements: Reproductive Endocrinology & Infertility (REI)

- All cases must follow the [General Requirements for the Submission of Case Studies](#).
- All cases must include a finalized corresponding report. For reporting criteria, refer to the [Documentation Practice Parameter](#).
- For the purpose of accreditation, all anatomy must be appropriately labeled (for example – CRL or LONG UT).

GYN cases in which a patient has had an oophorectomy are not acceptable for submission.

From your main site:

- submit a total of 2 complete standard TRANSVAGINAL gynecologic cases with their corresponding final reports
 - If you are seeking accreditation in “REI” **and** “Adjunct Competence in 3D”, both cases must include the acquisition image demonstrating the uterus in 3 orthogonal planes as well as the reconstructed CORONAL view of the uterus in a single image. Refer to 3D link on the GYN Imaging Checklist (page 2) for additional instructions.

- and -

- submit 2 complete TRANSVAGINAL first-trimester OB cases **with a demonstrable embryo or fetus** and their corresponding final reports. *Transabdominal images may be submitted as adjunct only.*

From each additional site or mobile unit:

- submit 1 complete standard TRANSVAGINAL gynecologic case with its corresponding final report.
 - If you are seeking accreditation in “REI” **and** “Adjunct Competence in 3D” and 3D is performed at the additional site/mobile unit, your case must include the acquisition image and a separate image of the reconstructed CORONAL view of the uterus.

- and -

- submit 1 complete TRANSVAGINAL first-trimester OB case **with a demonstrable embryo or fetus** and its corresponding final report. *Transabdominal images may be submitted as adjunct only.*

REI Ultrasound Imaging Checklists

- **All cases must include a finalized corresponding report.** For reporting criteria, refer to the [Documentation Practice Parameter](#).
- For the purpose of accreditation, all anatomy must be appropriately labeled (for example – LONG UT).

If applying for REI without Adjunct Competence in 3D: Submit 4 Standard GYN Exams

Labeled images of the following:

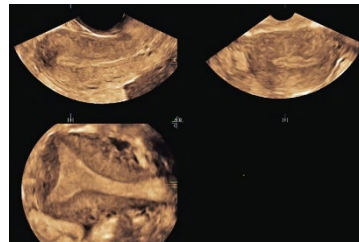
- 1. Uterus – sufficient images to show orientation and rule out masses and other abnormalities (at least 2 orthogonal planes)
- 2. Uterus measured in 3 dimensions
- 3. Endometrium
- 4. Measurement of endometrium
- 5. Cervix
- 6. Cul-de-sac
- 7. RIGHT ovary measured in 3 dimensions obtained in 2 orthogonal planes
- 8. LEFT ovary measured in 3 dimensions obtained in 2 orthogonal planes

If applying for REI and Adjunct Competence in 3D, perform the standard GYN exam (*above*) and include:

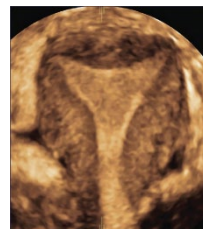
Refer to the [3D Image Requirements & Acquisition/Submission Demonstration](#) (← *click link*)

Labeled images of the following:

- 9. Acquisition image demonstrating the uterus in 3 orthogonal planes



- 10. Reconstructed CORONAL view of the uterus in a single image - this view should demonstrate the outer contour of the uterus and the inner endometrial shape



REI Ultrasound Imaging Checklists

- **All cases must include a finalized corresponding report.** For reporting criteria, refer to the [Documentation Practice Parameter](#).
- For the purpose of accreditation, all anatomy must be appropriately labeled (for example – CRL).
- **ALARA** – scans performed at less than 10 weeks GA should be done monitoring the Thermal Index for SOFT TISSUE (TIs).

Standard OB – 1st Trimester

Labeled images of the following:

- 1. Uterus to determine location of gestational sac and rule out masses / abnormalities (at least 2 orthogonal planes)
- 2. Adnexal structures, even if ovaries not visualized
- 3. Cul-de-sac
- 4. Presence of embryo or fetus
- 5. Number of gestational sacs, embryos, or fetuses
- 6. Crown rump length
- 7. Demonstrate fetal heart rate using M-mode
- 8. If applicable, chorionicity and, if possible, amnionicity