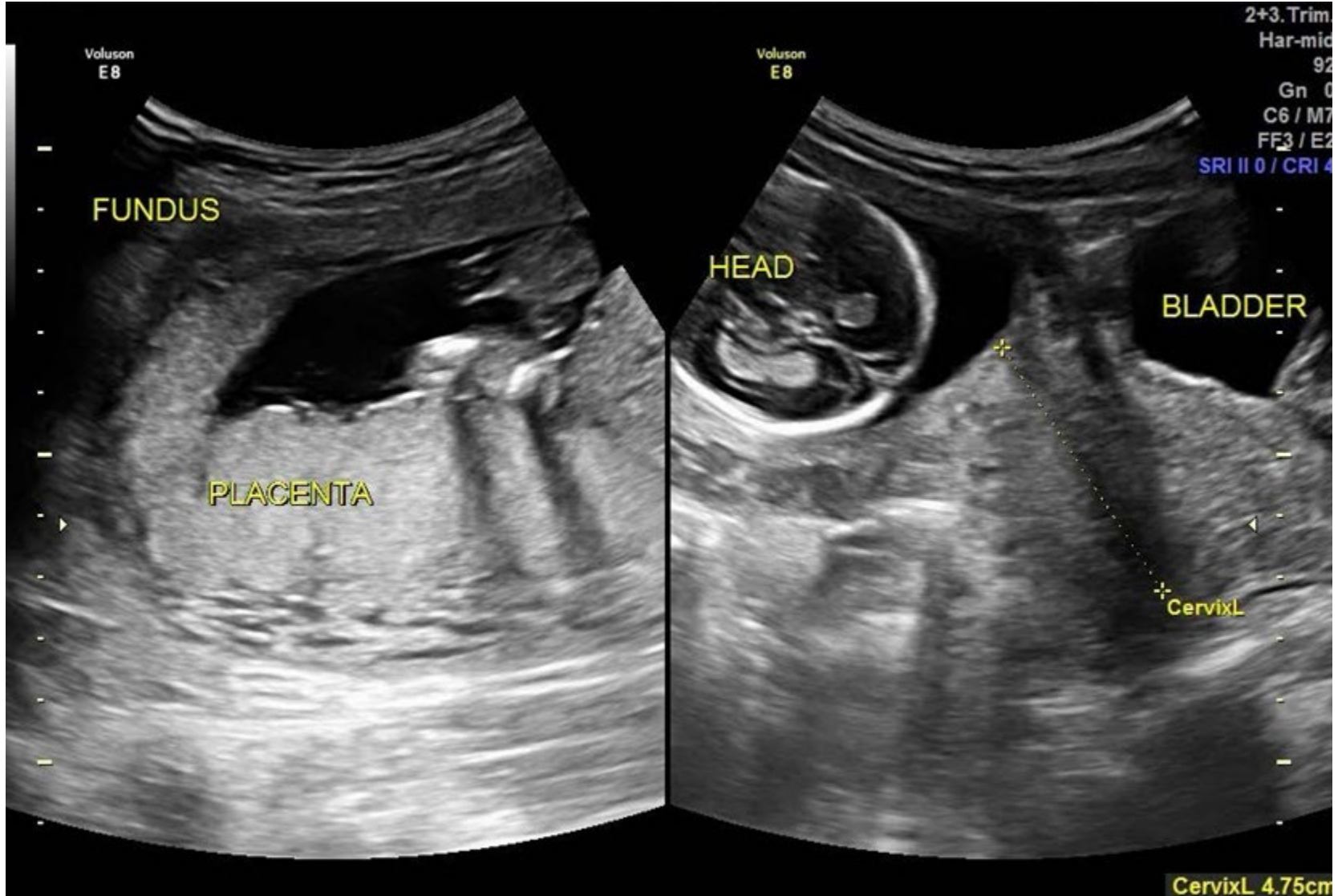


Detailed Anatomy Example Images

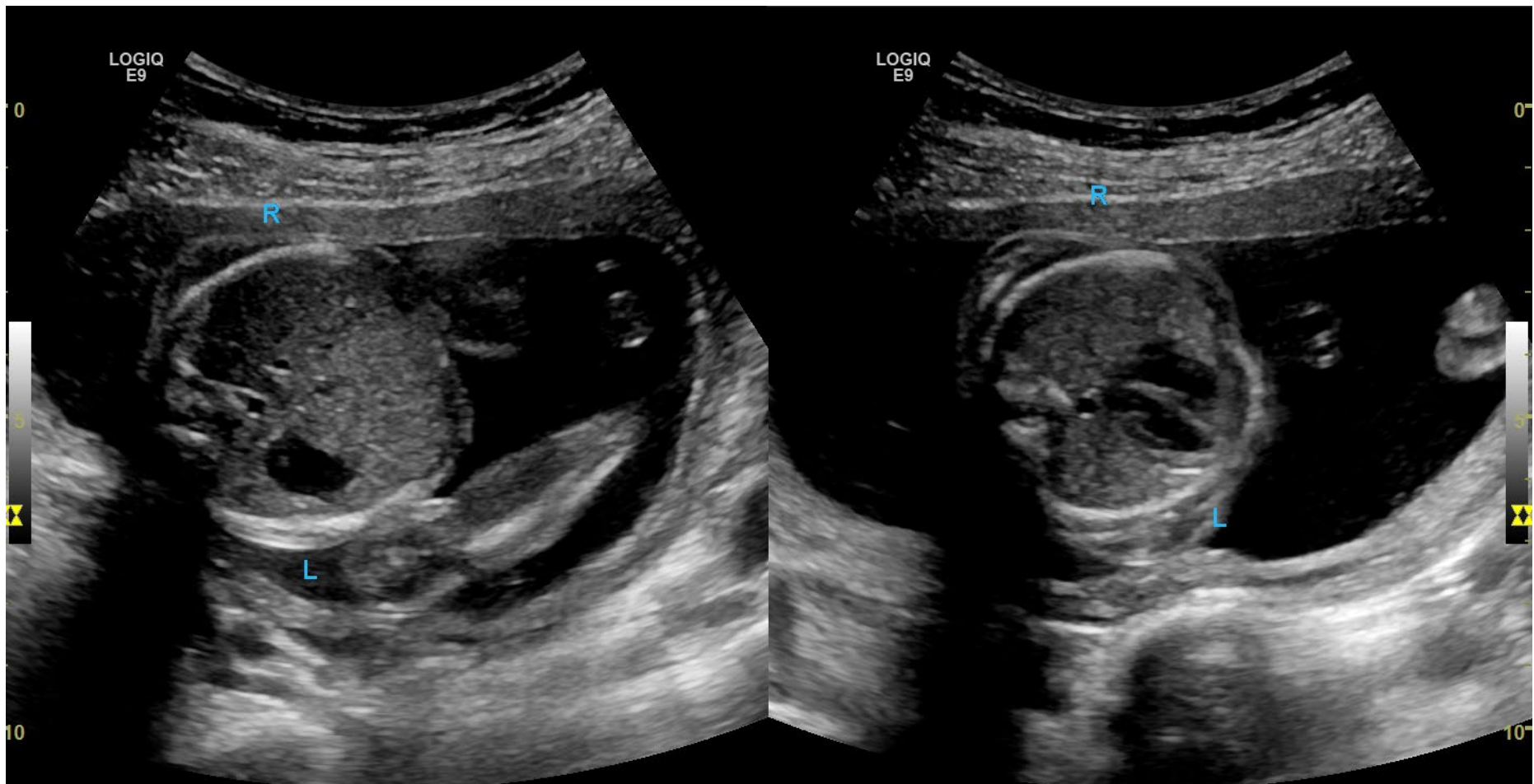
Fetal position cephalic, cervix, and placenta



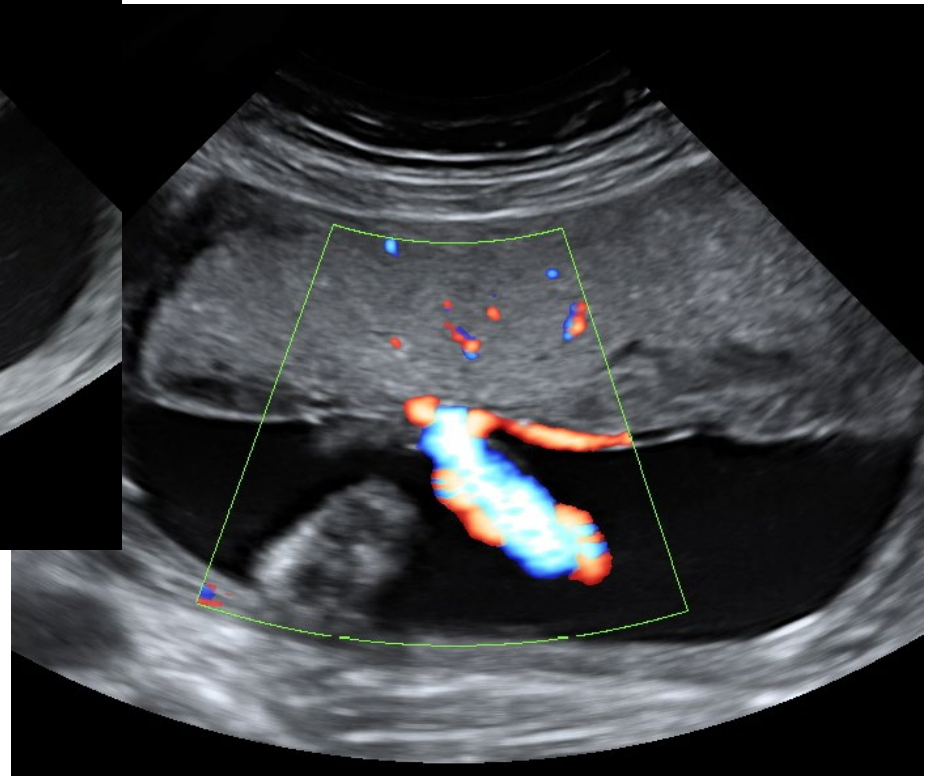
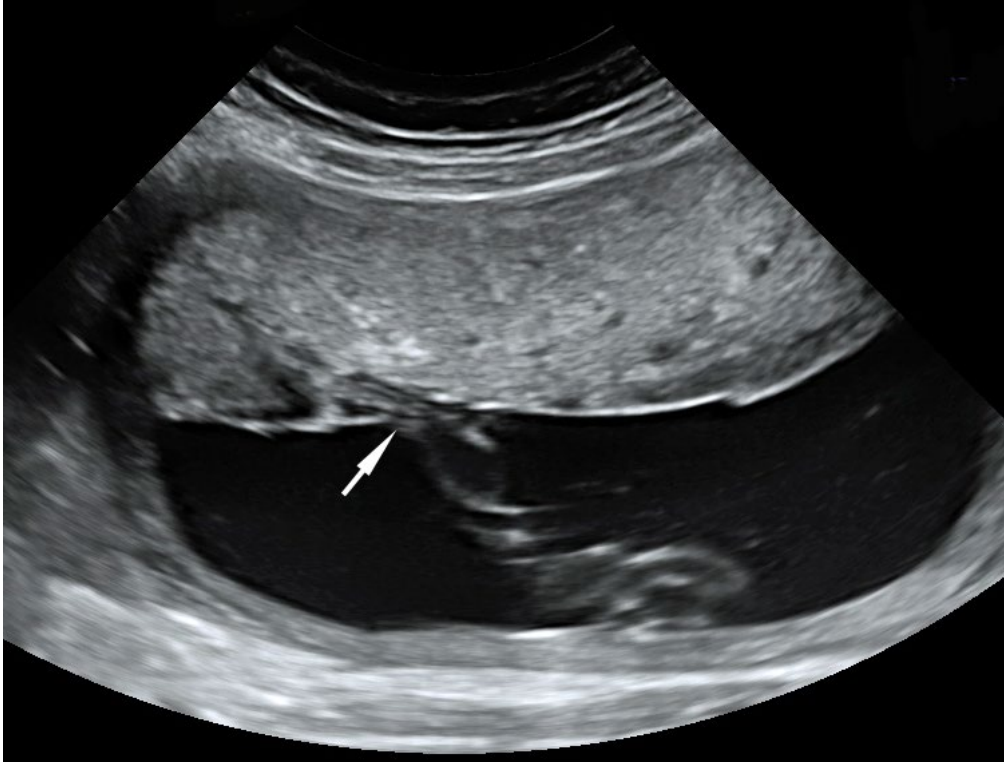
Fetal position breech, cervix



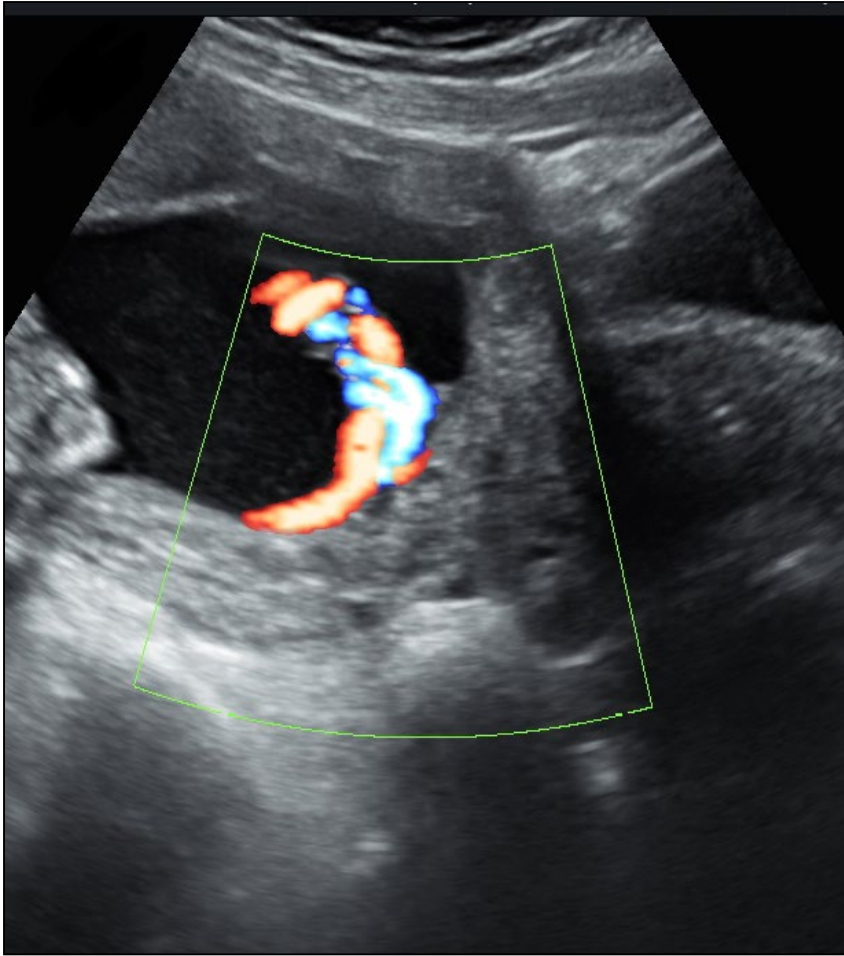
Situs breech



Placental cord insertion

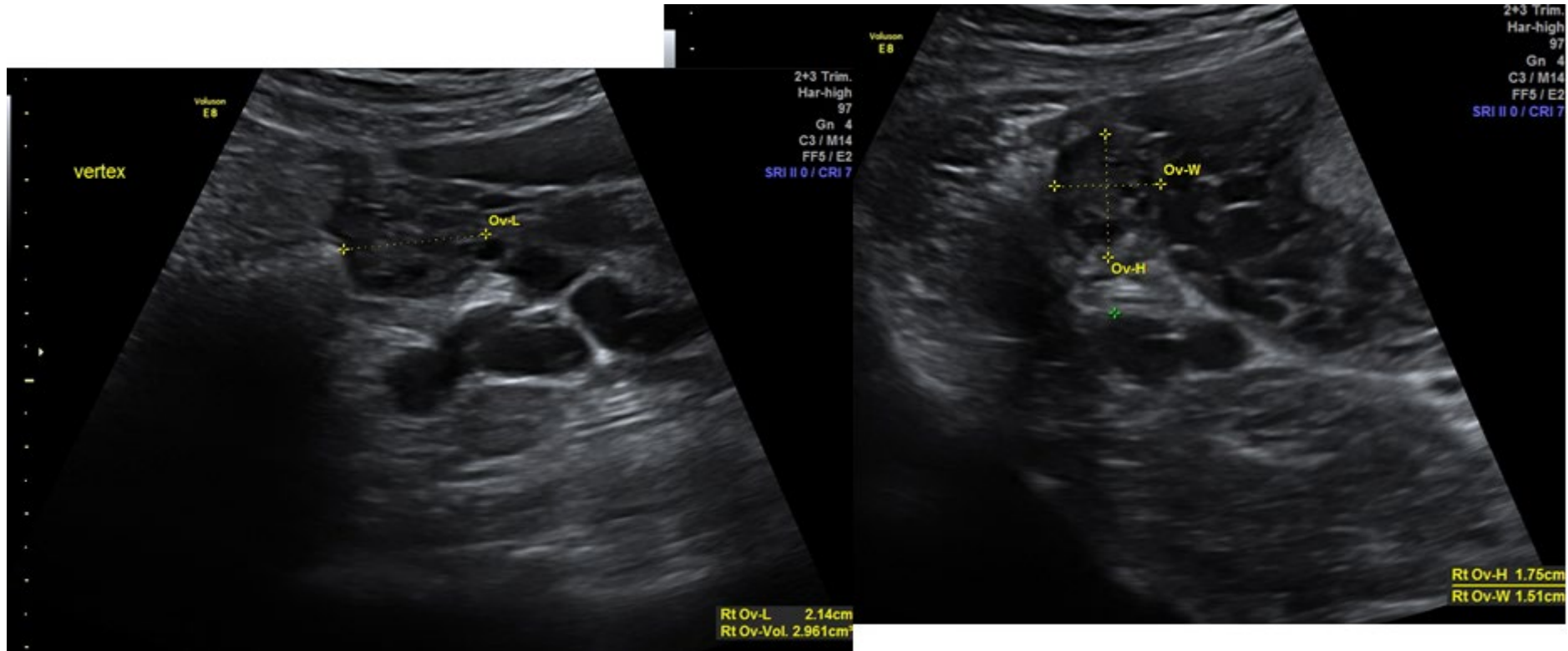


Placental cord insertion: Velamentous example



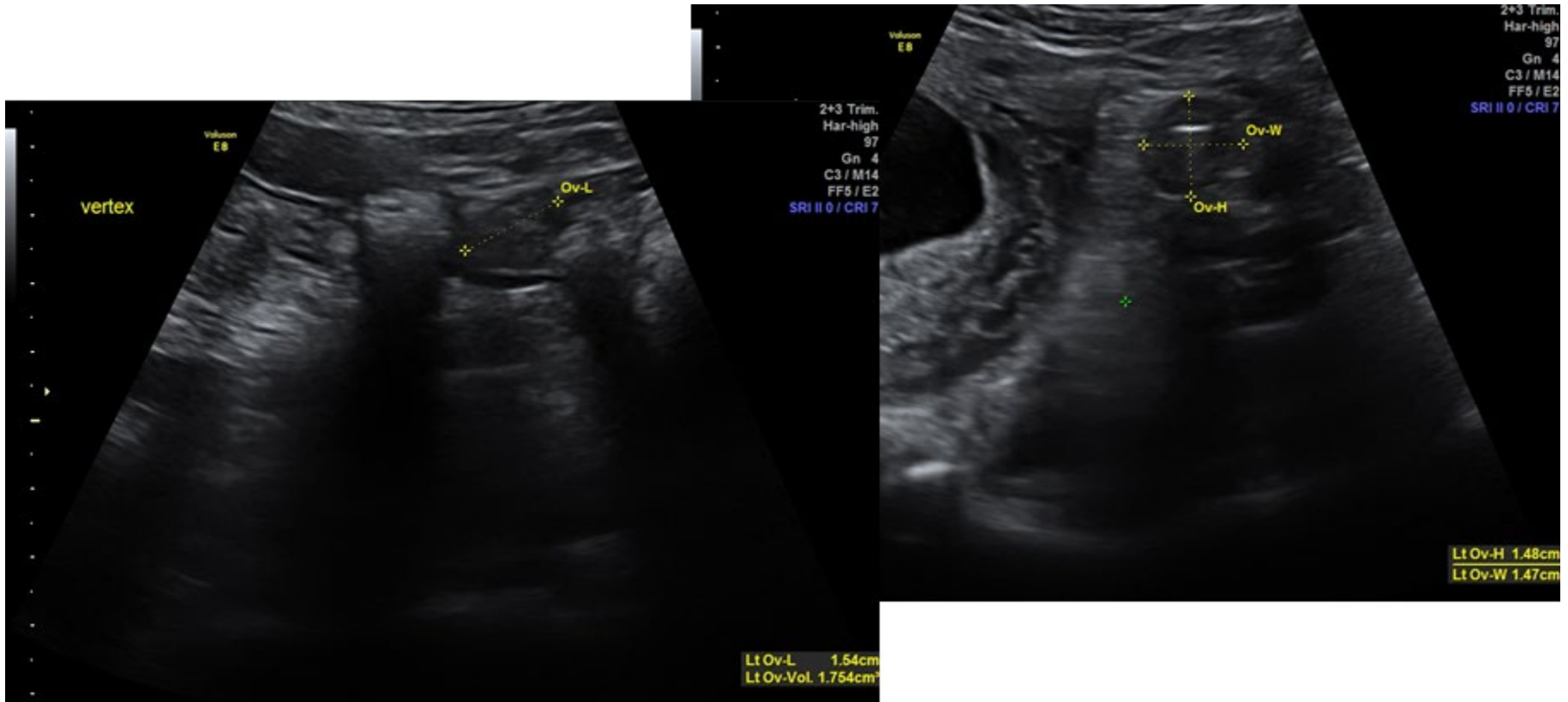
Right ovary

please note: measurements are not required

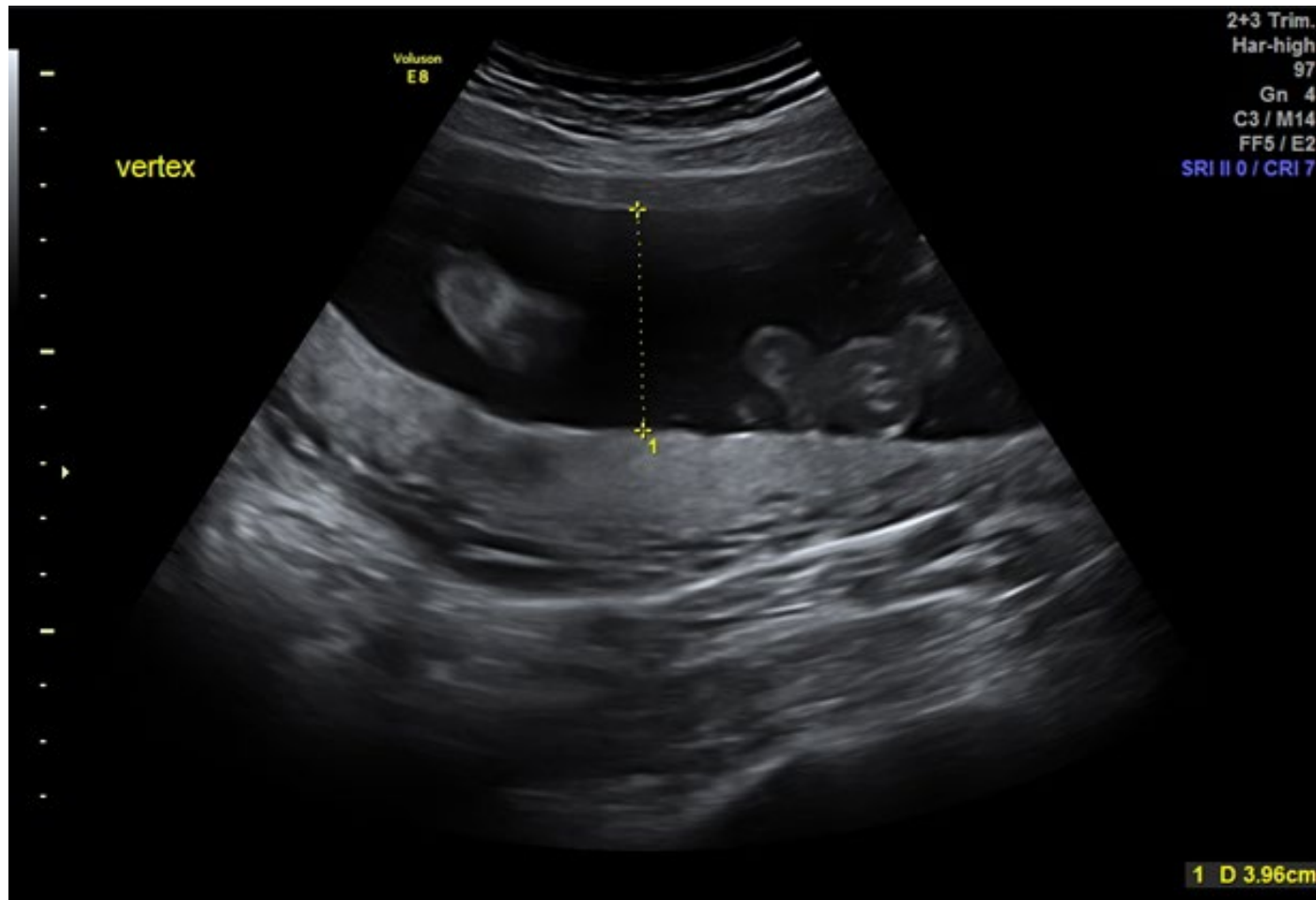


Left ovary

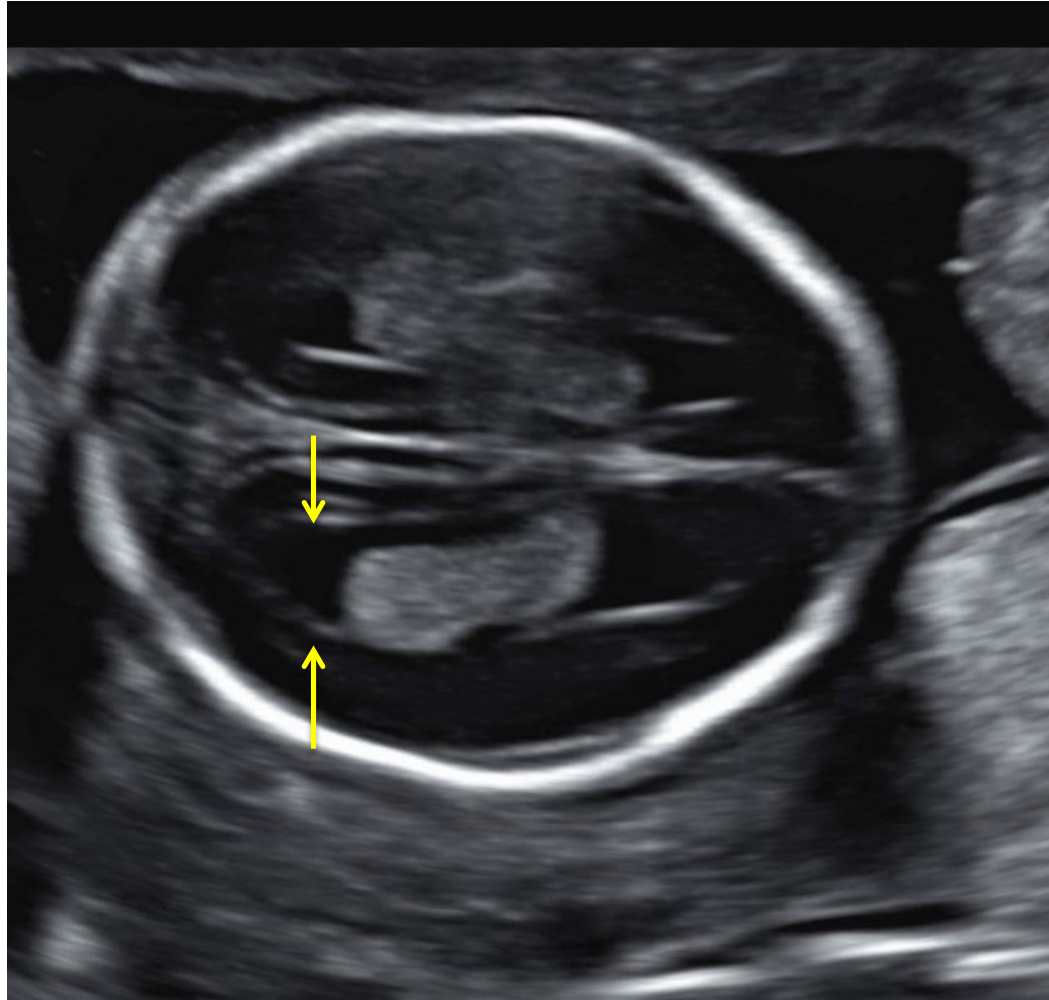
please note: measurements are not required



Upper uterus, posterior placenta, Example DVP of amniotic fluid – not required



Lateral ventricles



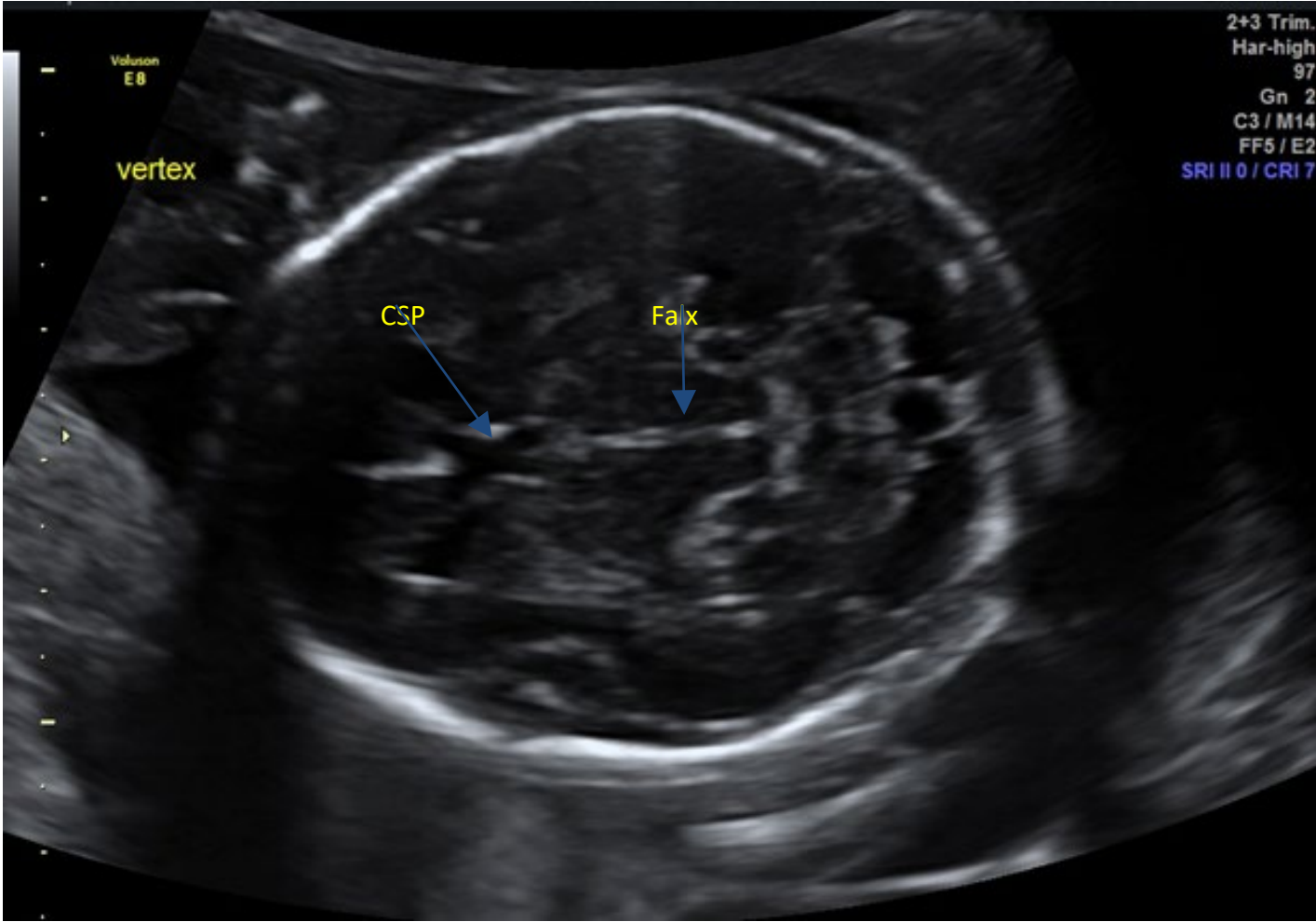
Lateral ventricles with measurement



Bilateral choroid plexus



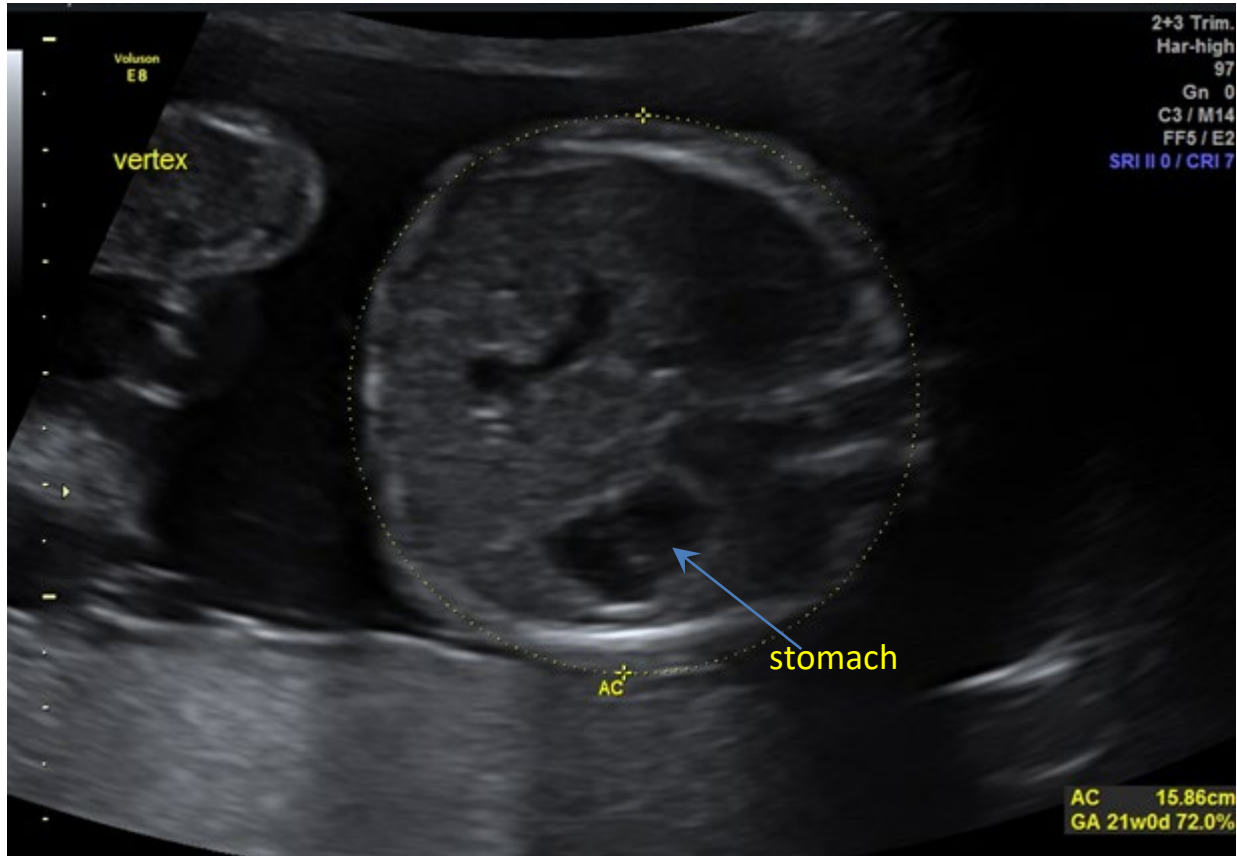
Midline falx, Cavum septi pellucidum (CSP)



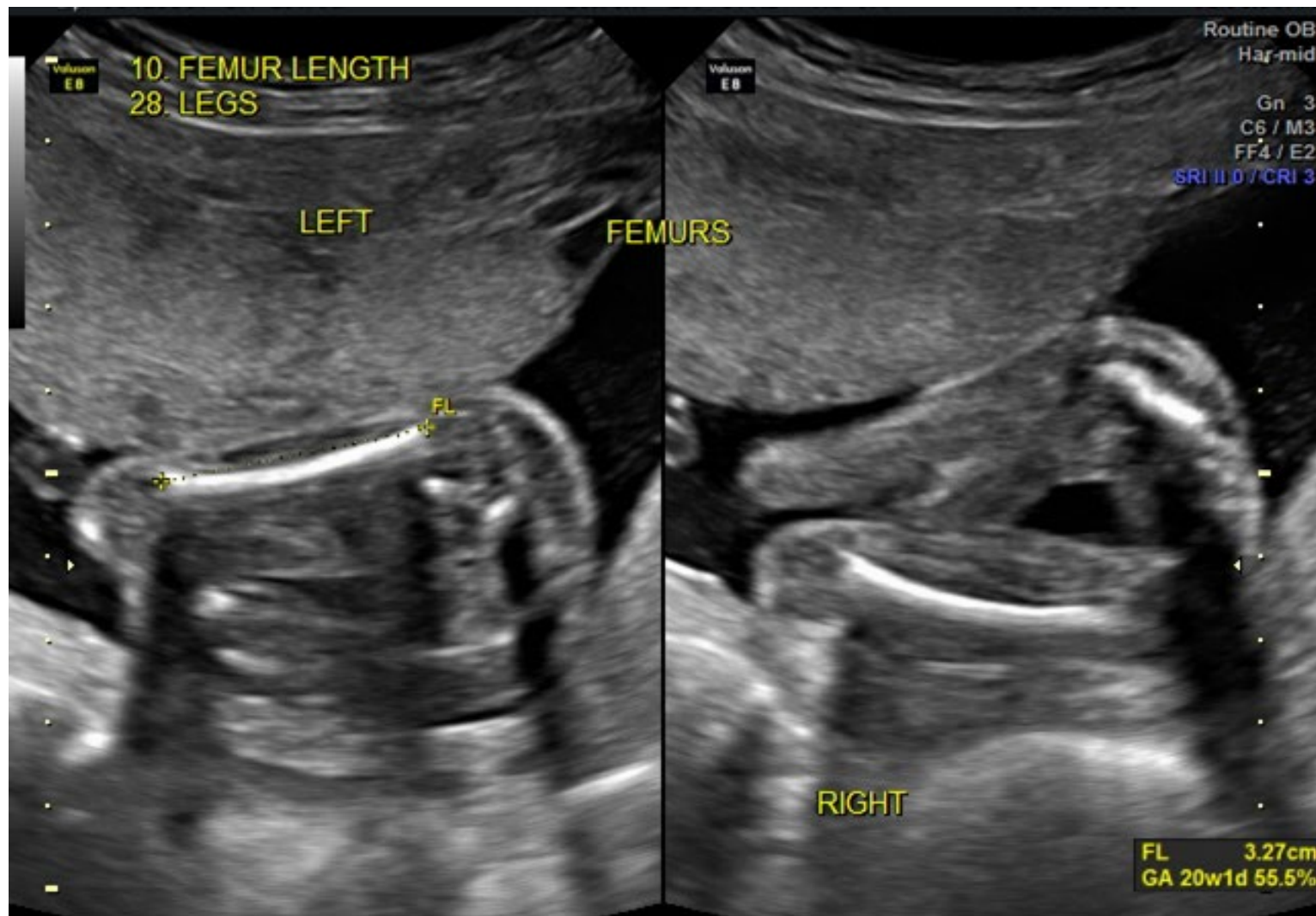
BPD/HC



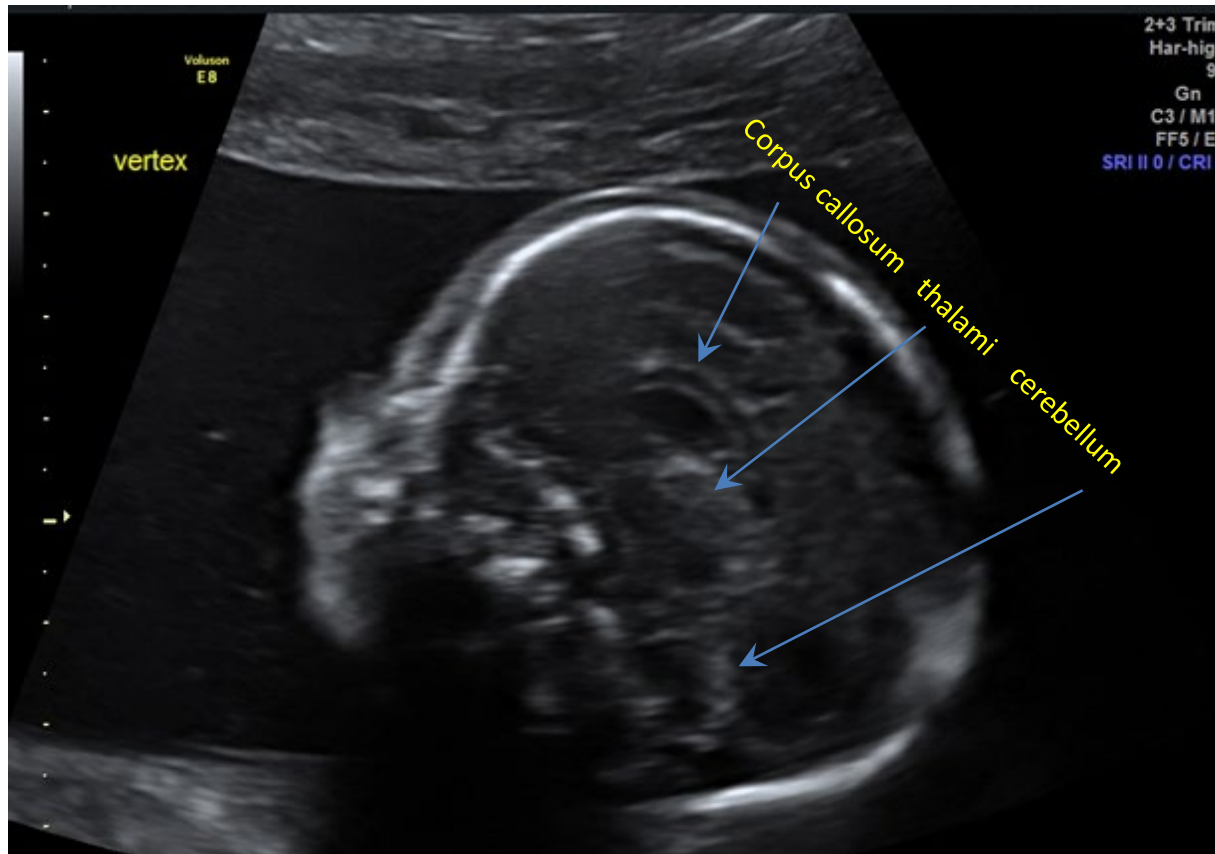
AC, Stomach



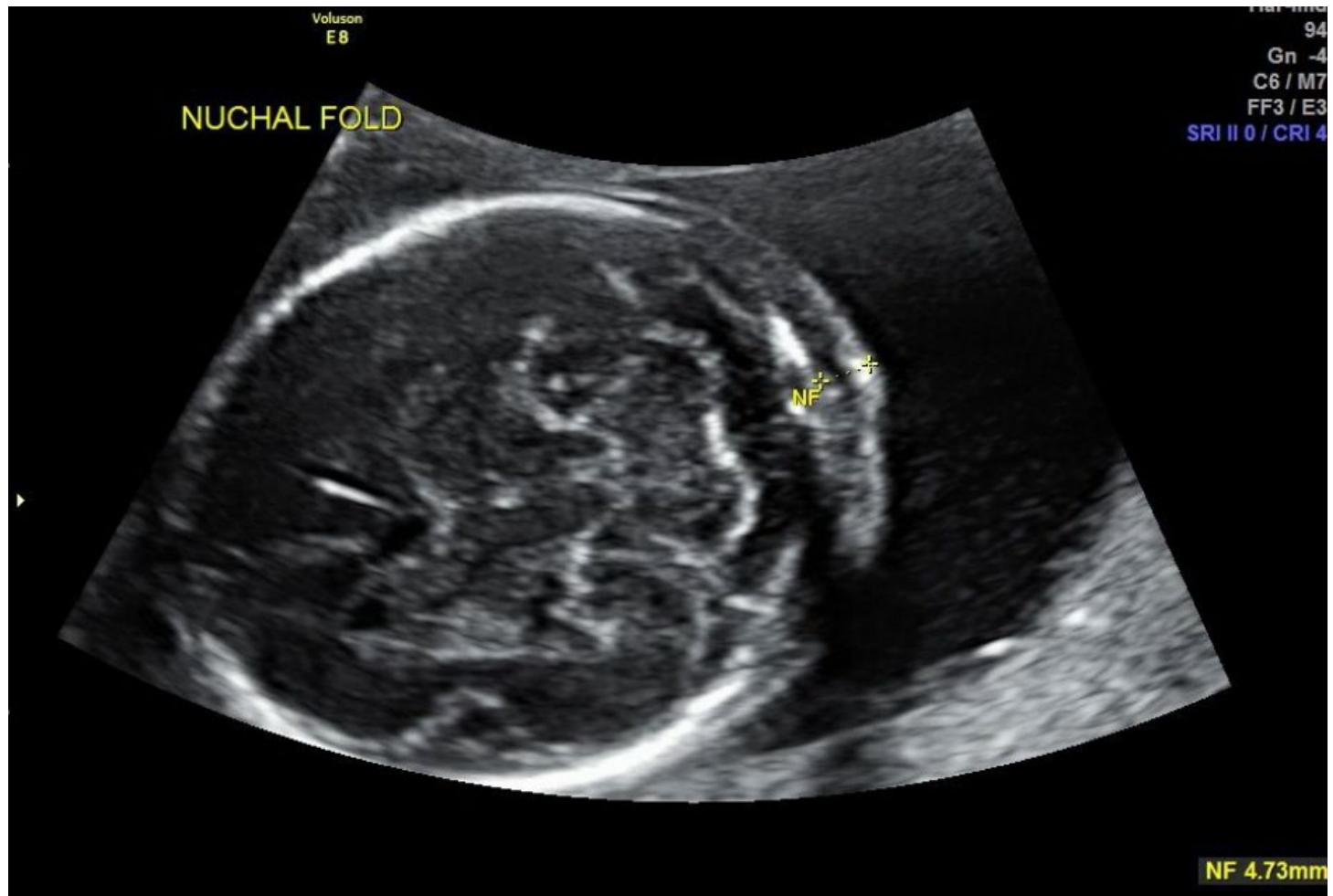
Bilateral Femur with FL



corpus callosum



Nuchal Fold



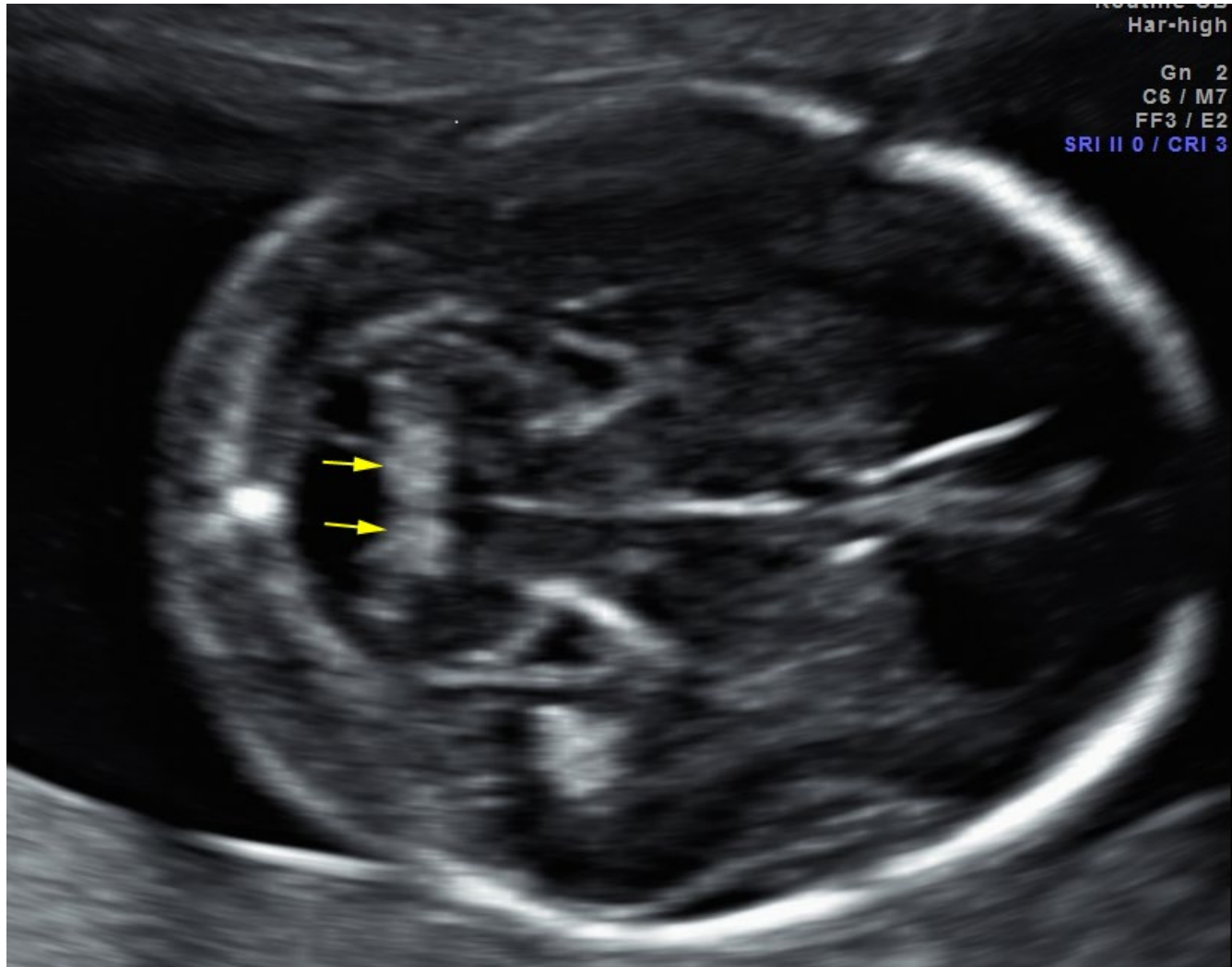
Cerebellum measurement



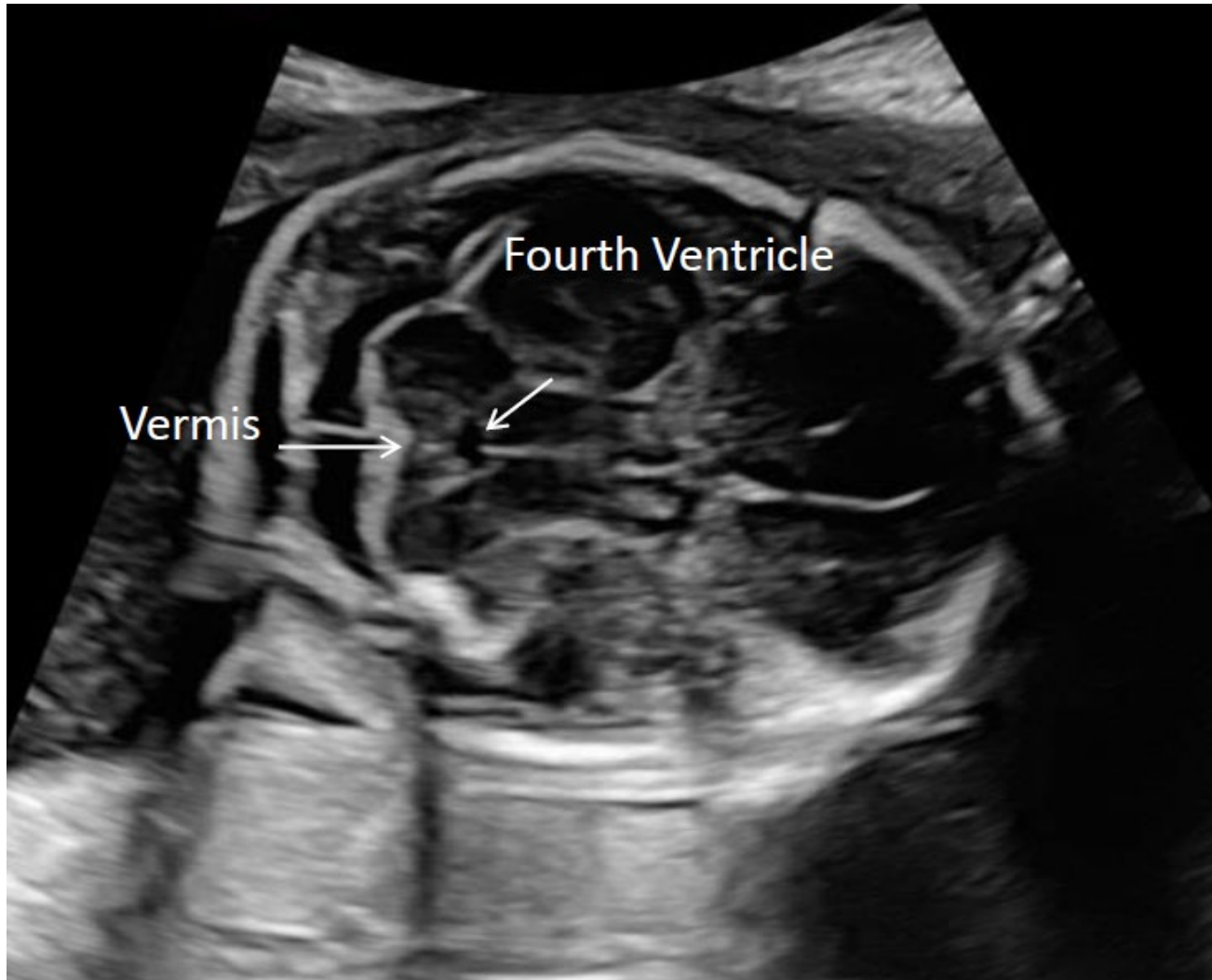
Cerebellum, cisterna magna



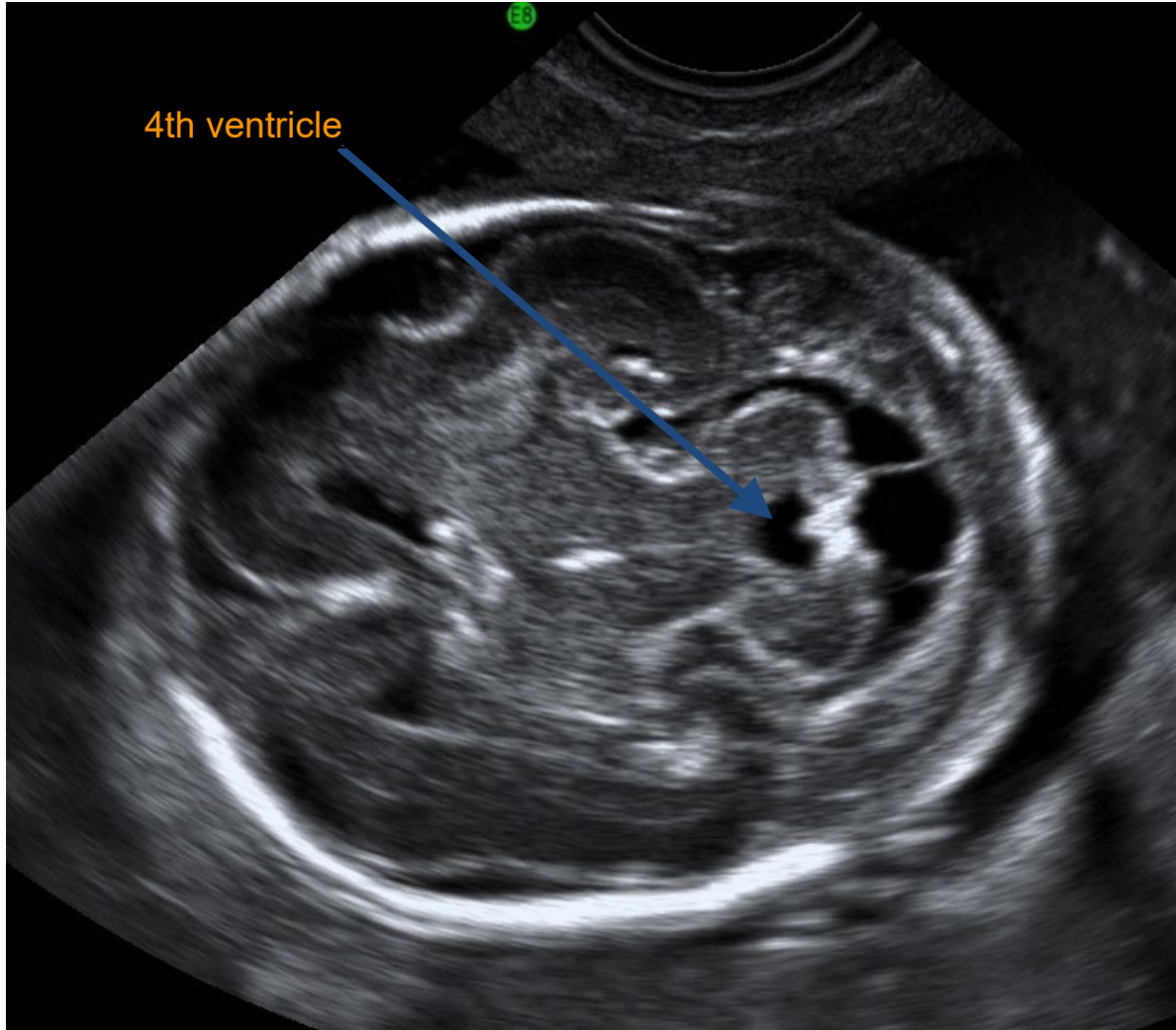
Cerebellar vermis



Another example cerebellar vermis

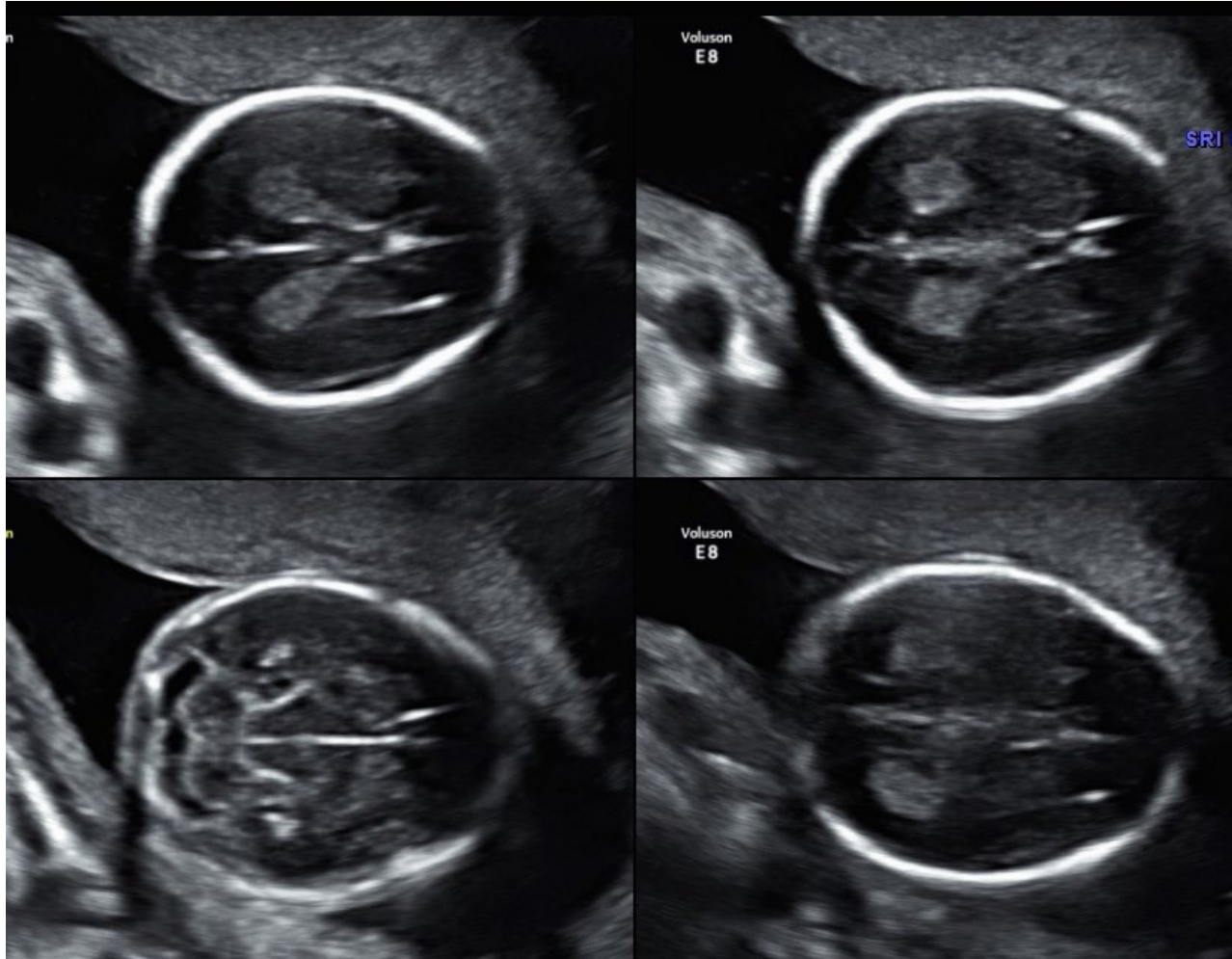


4th ventricle/Cerebellar vermis



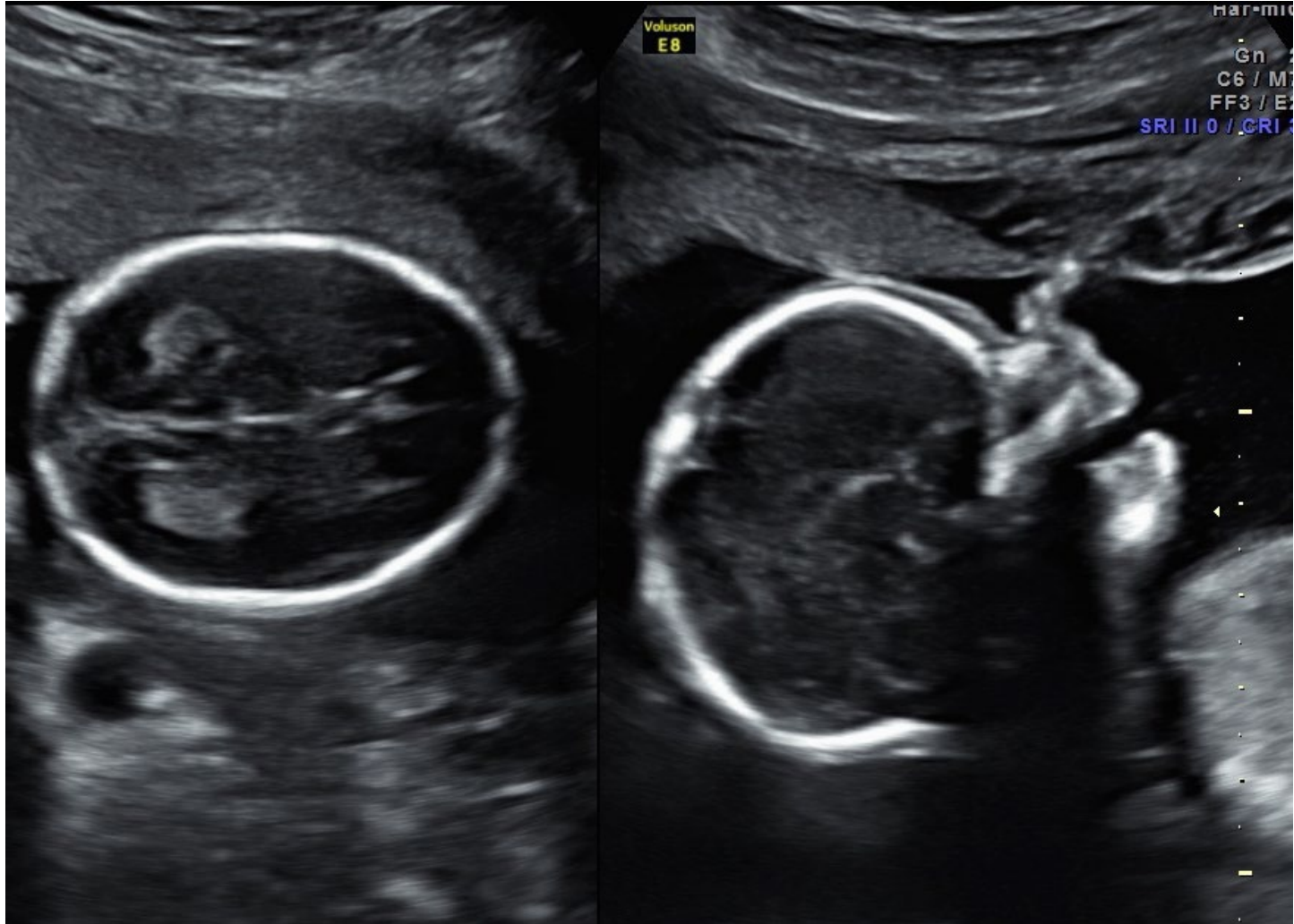
Integrity and shape of cranial vault

multiple examples

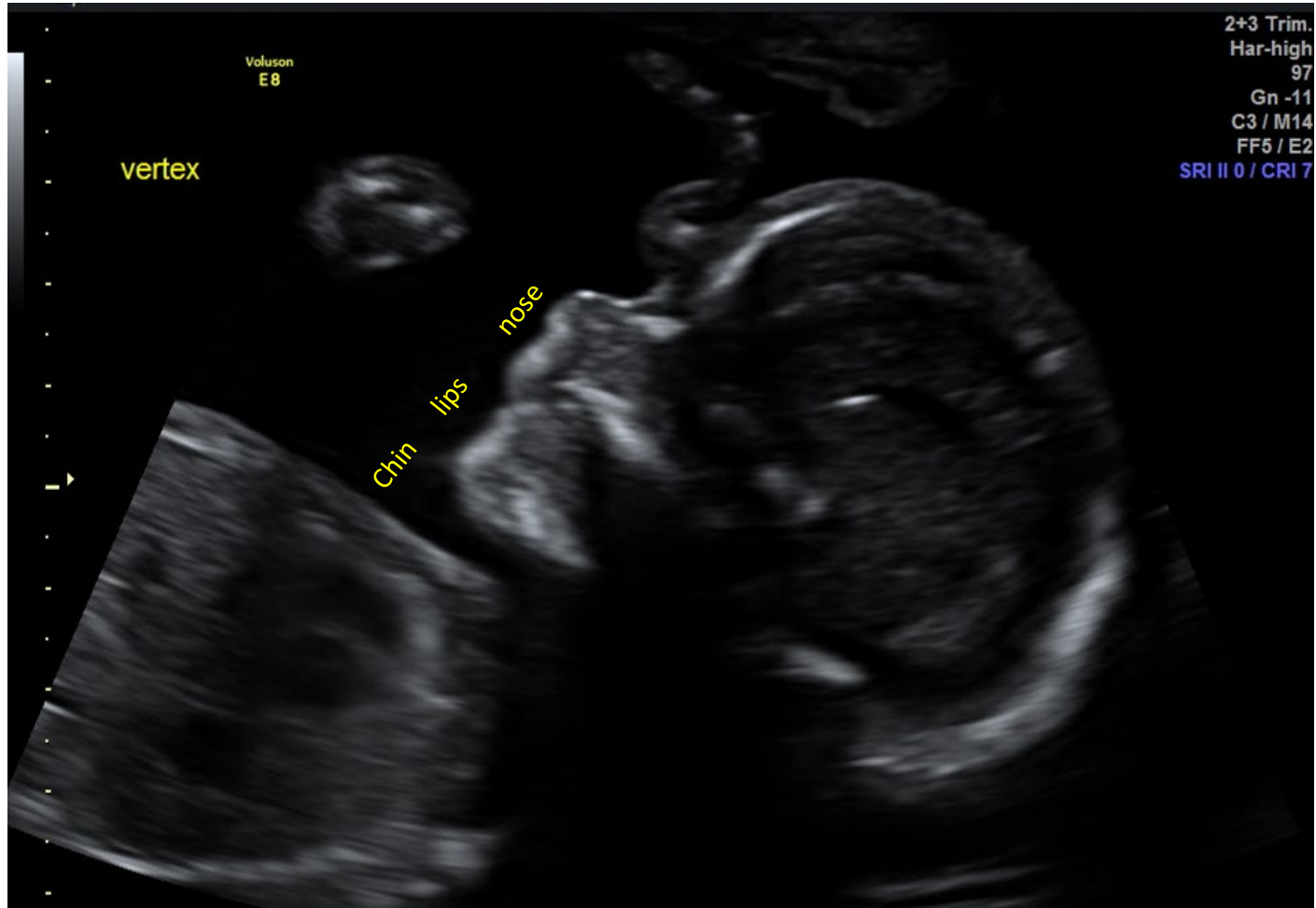


Integrity and shape of cranial vault

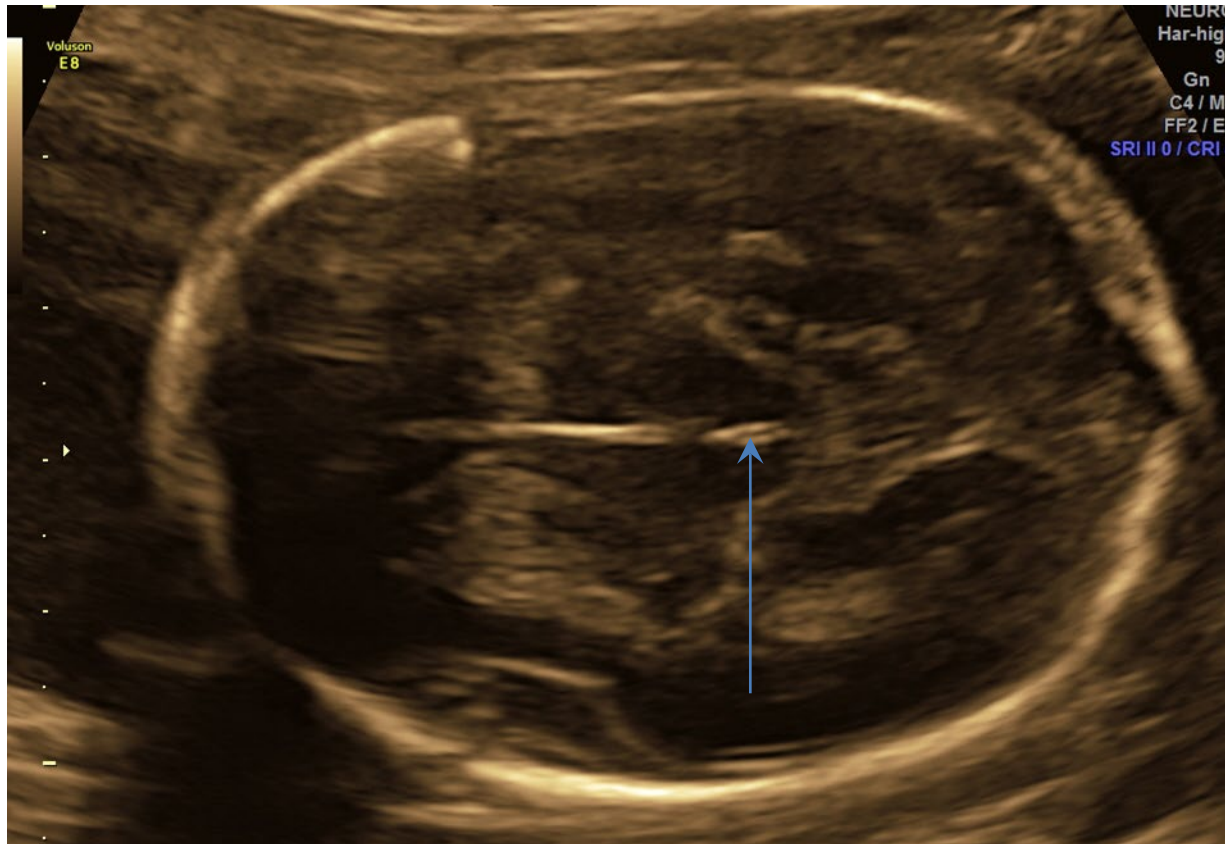
continued examples



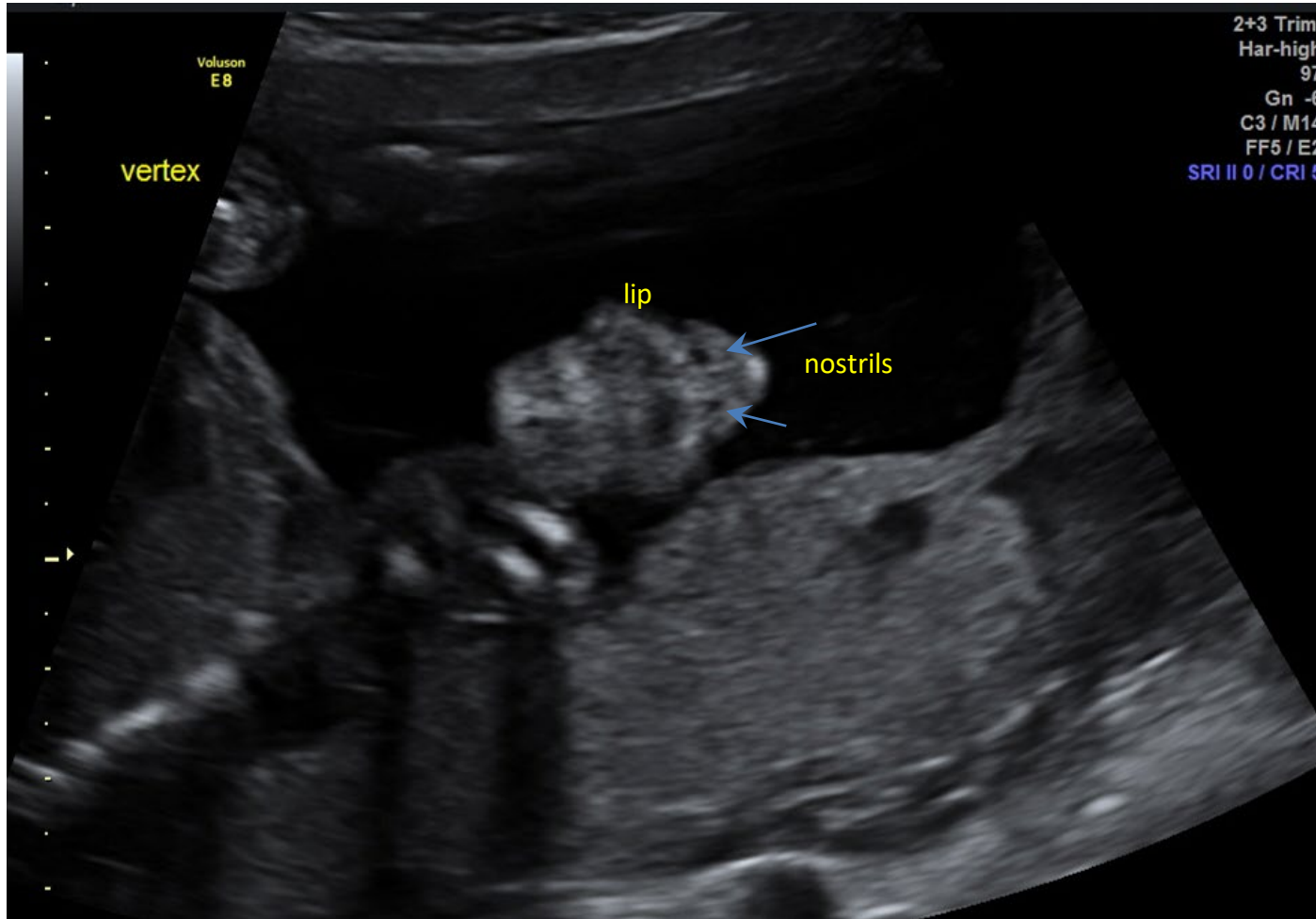
Profile



3rd ventricle



Upper lip/nose



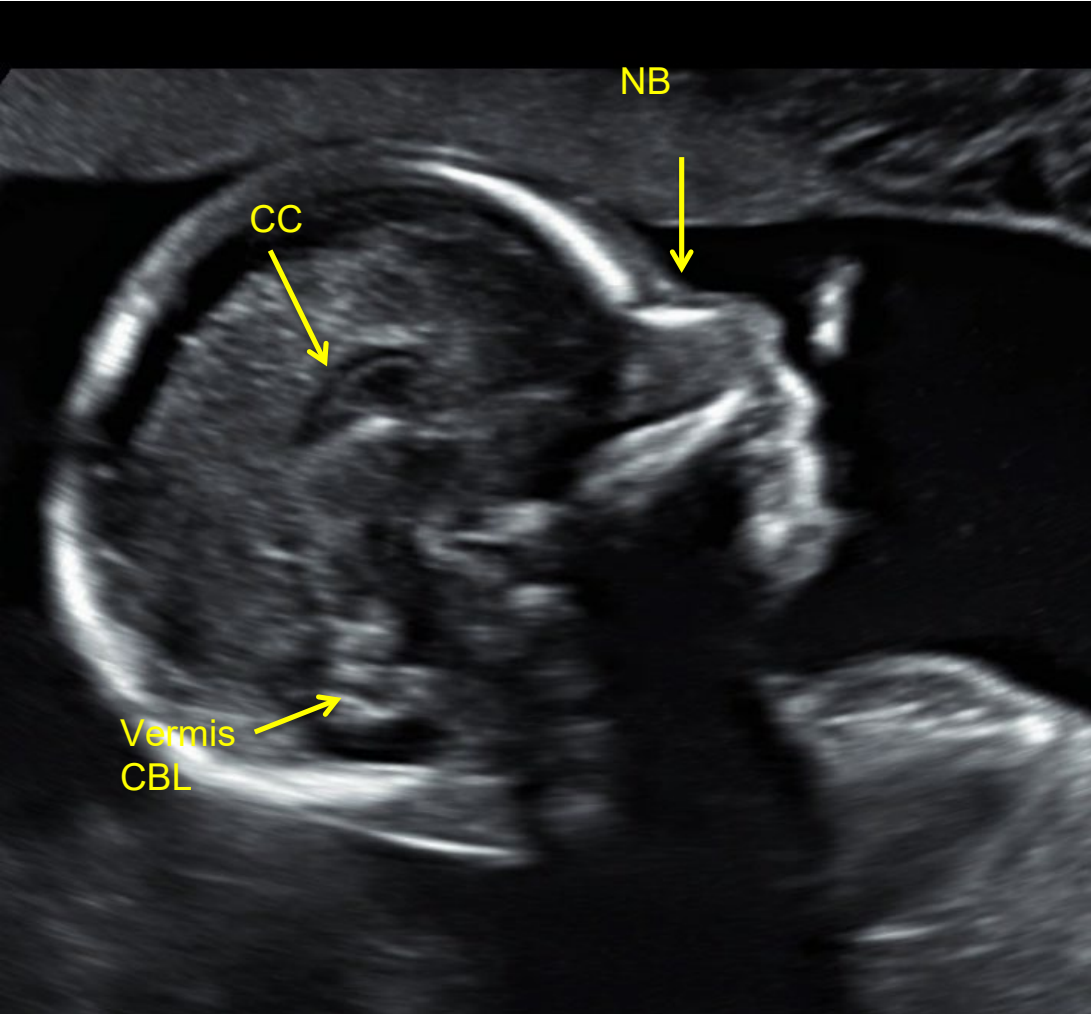
Lenses



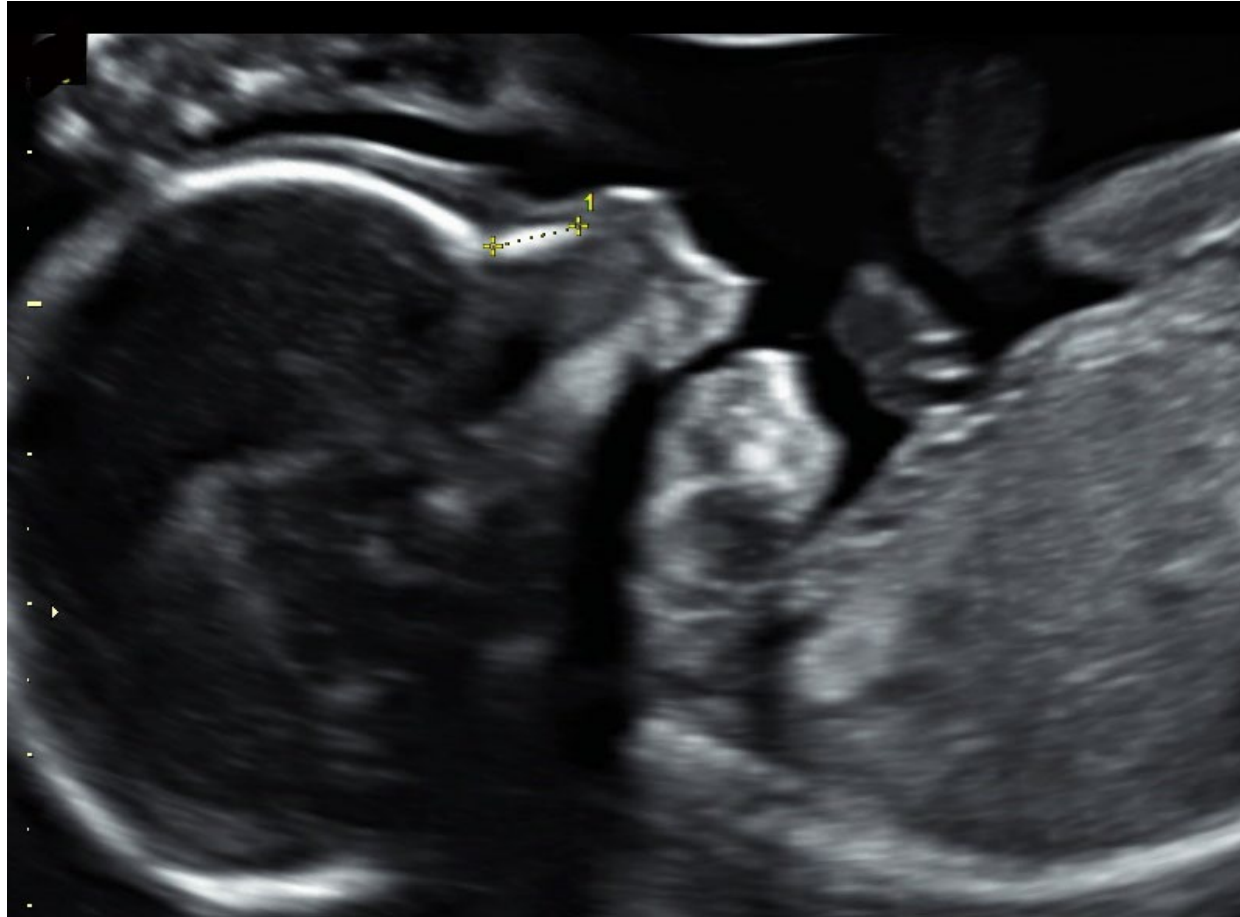
Orbits/Lenses



Profile (w/ NB, CC, CBL, Vermis)



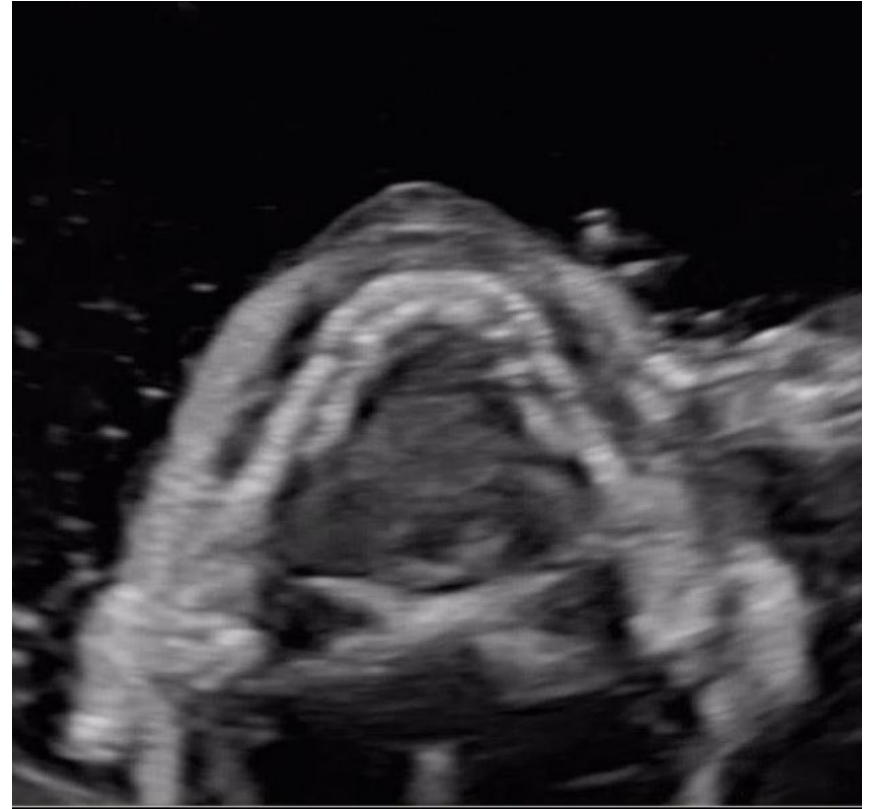
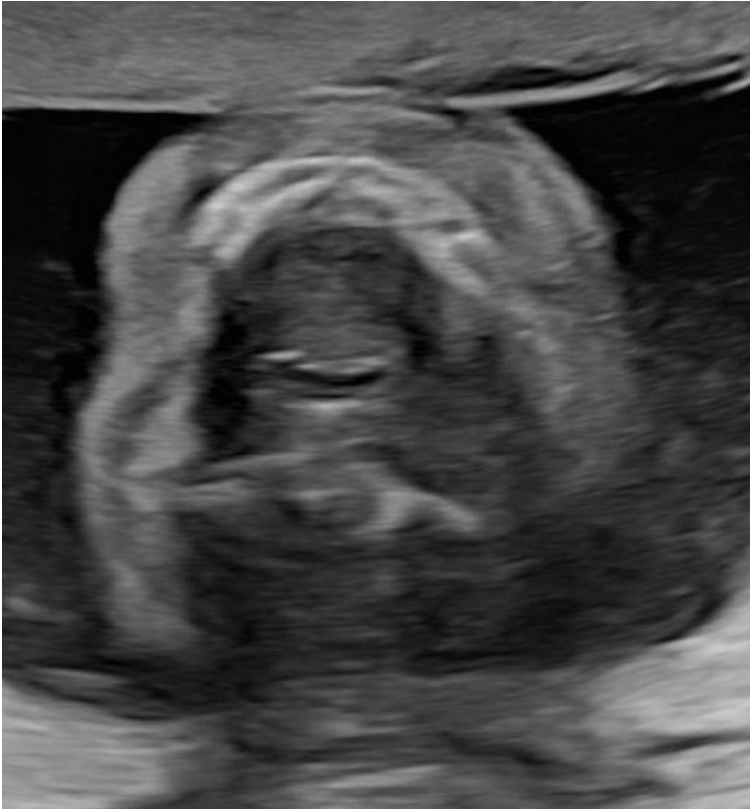
Nasal Bone Measurement



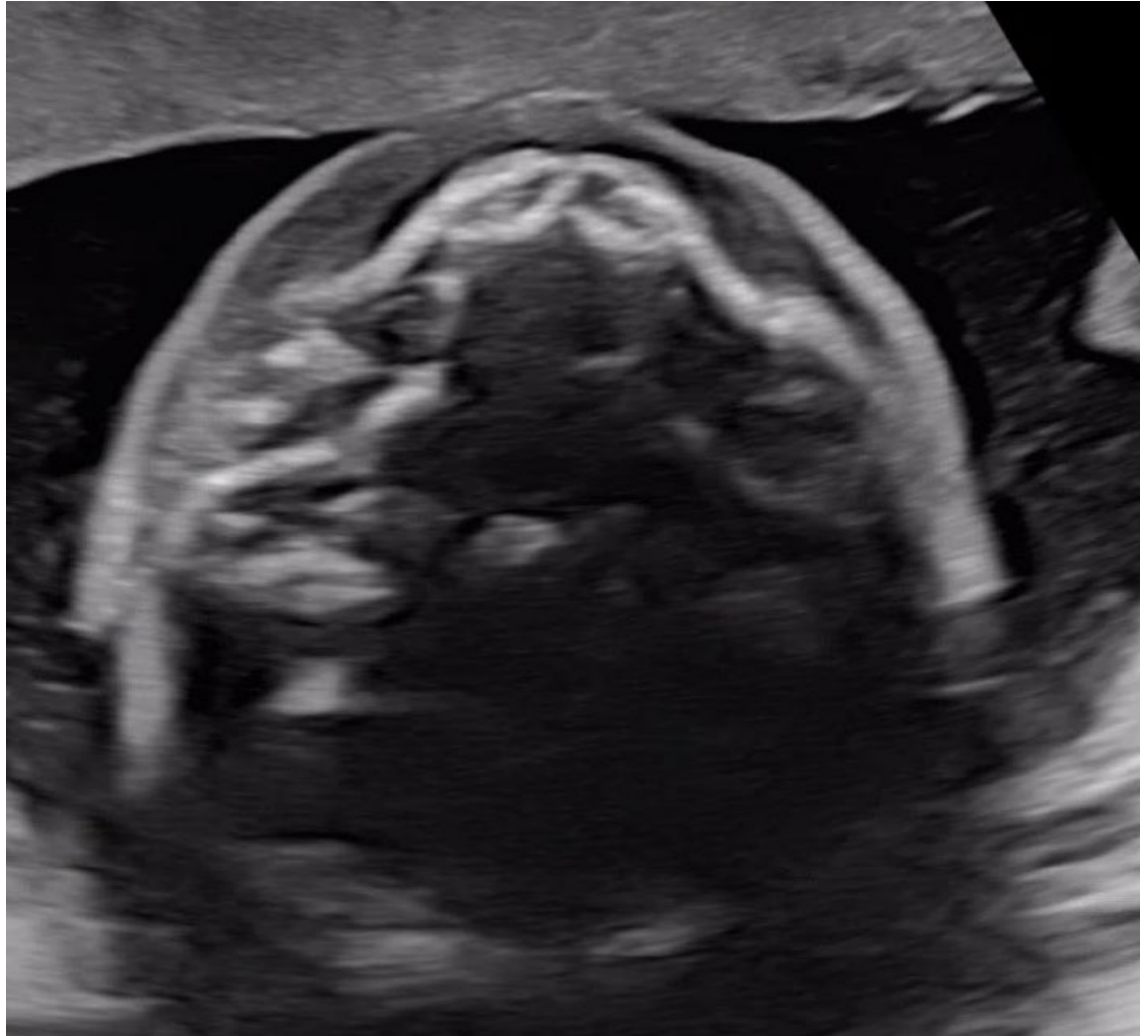
Profile and Mandible



Mandible



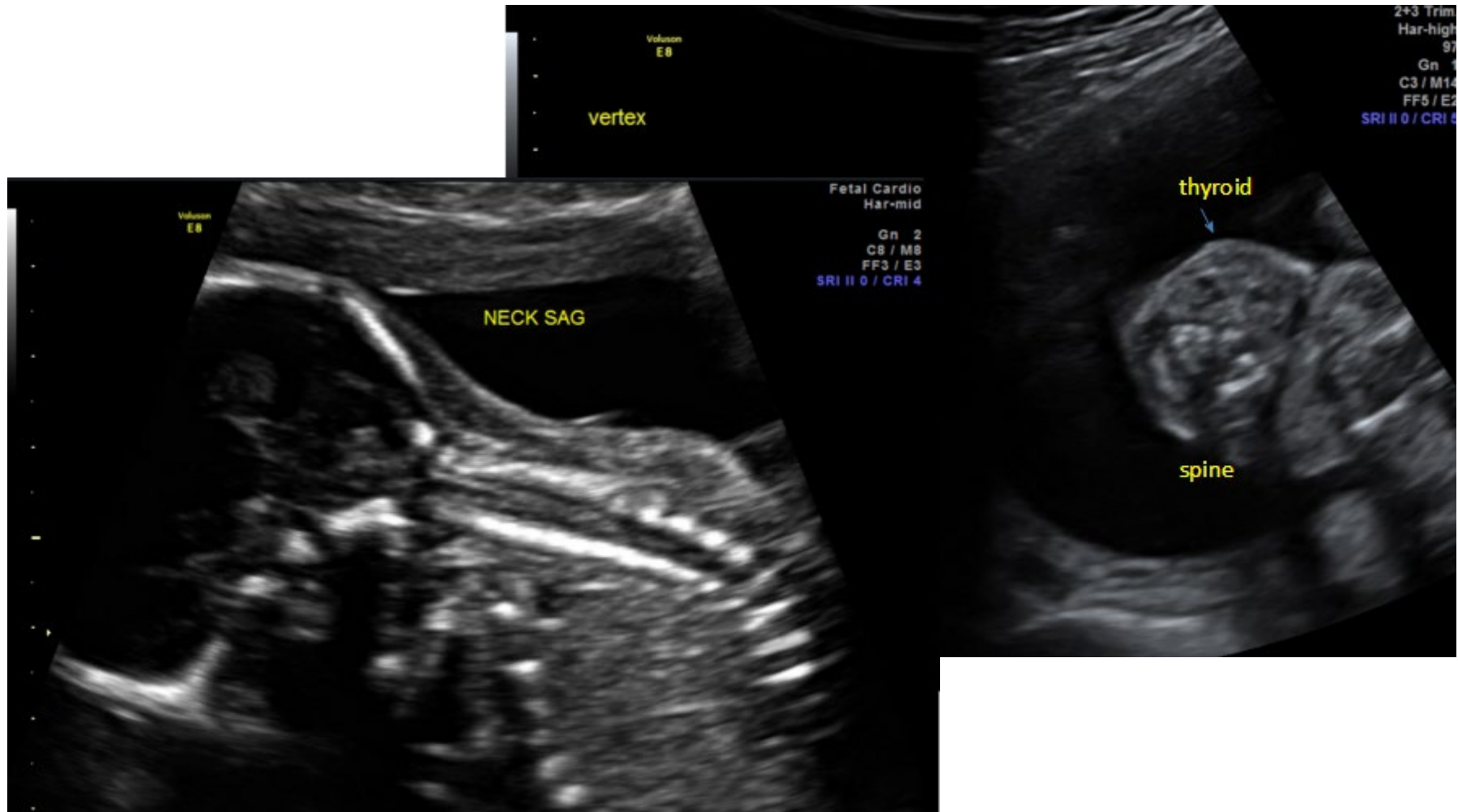
Maxilla/palate



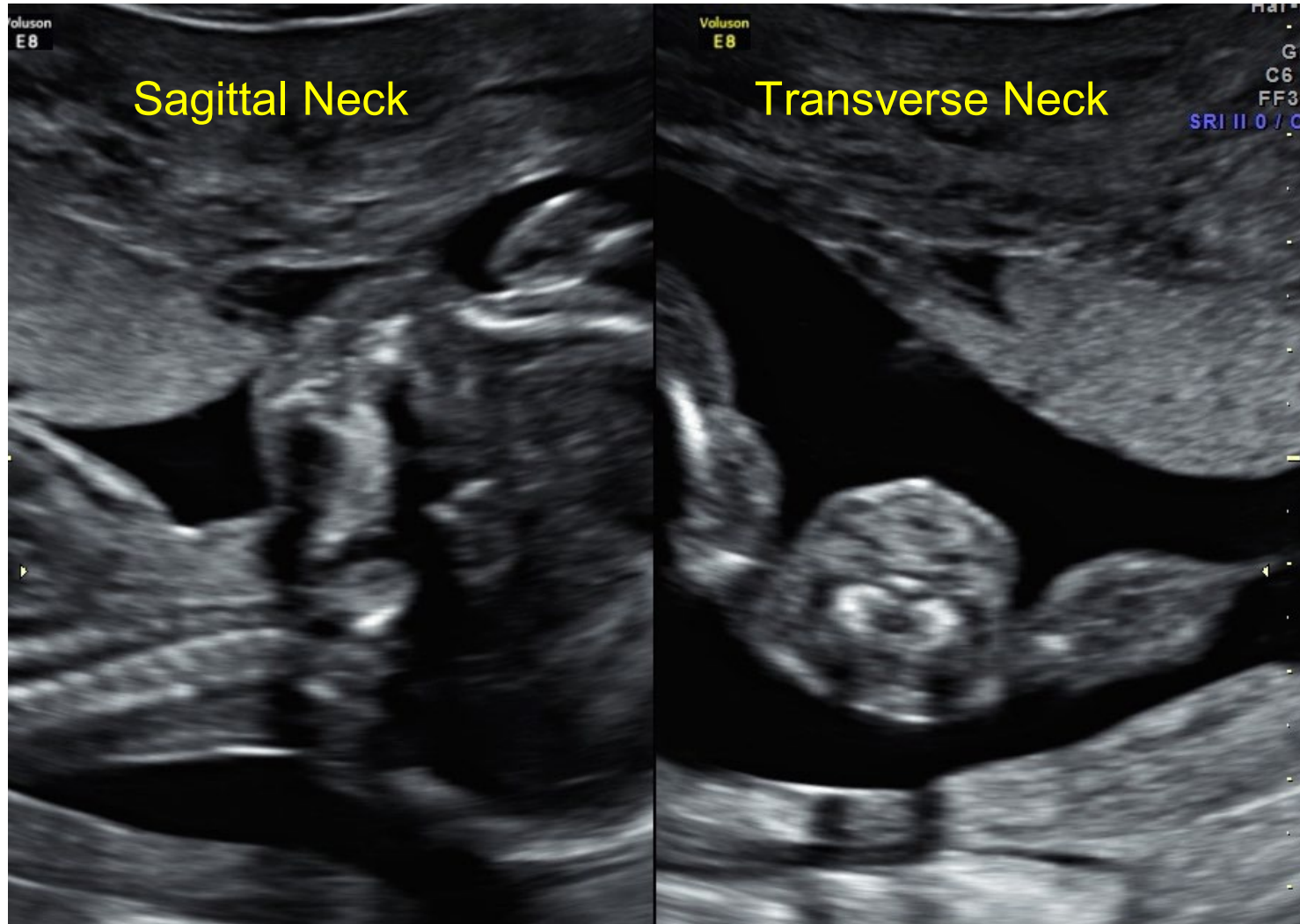
Tongue



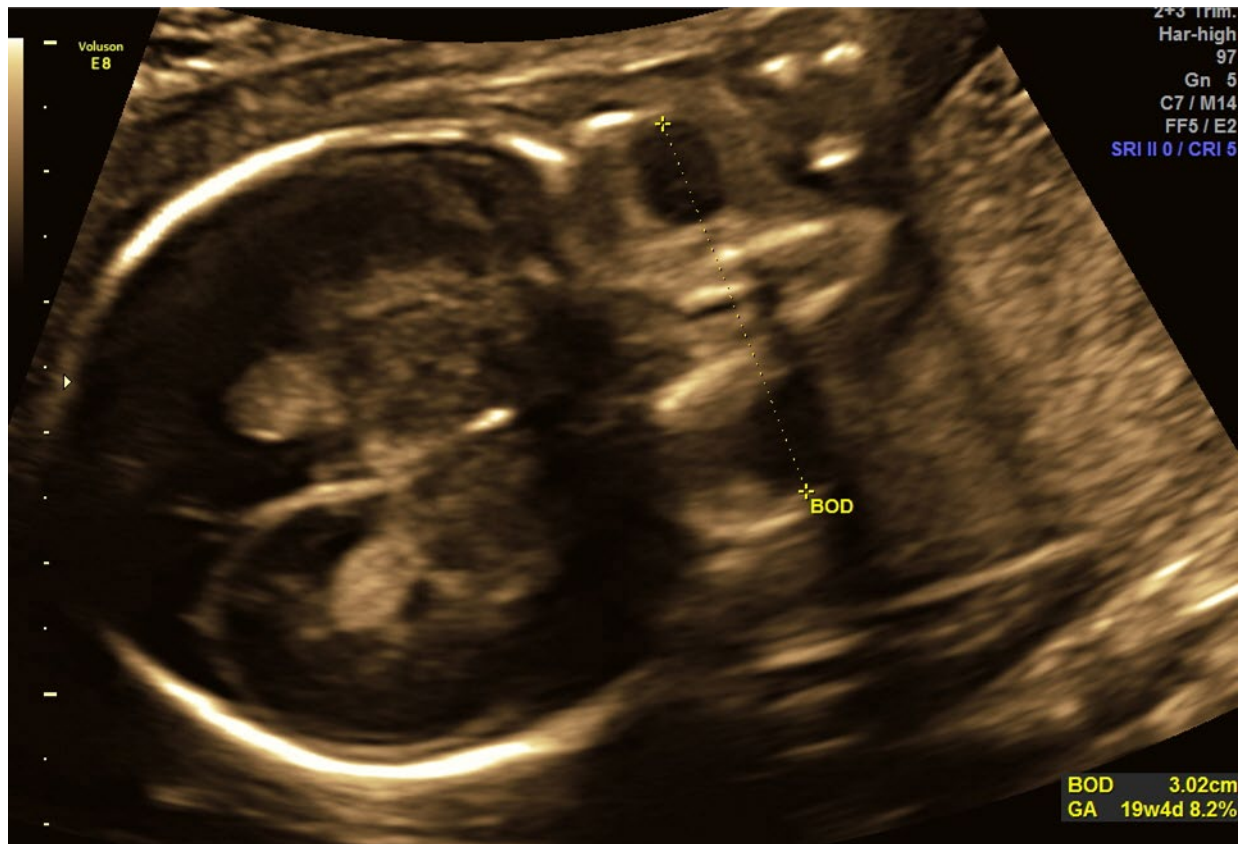
Neck



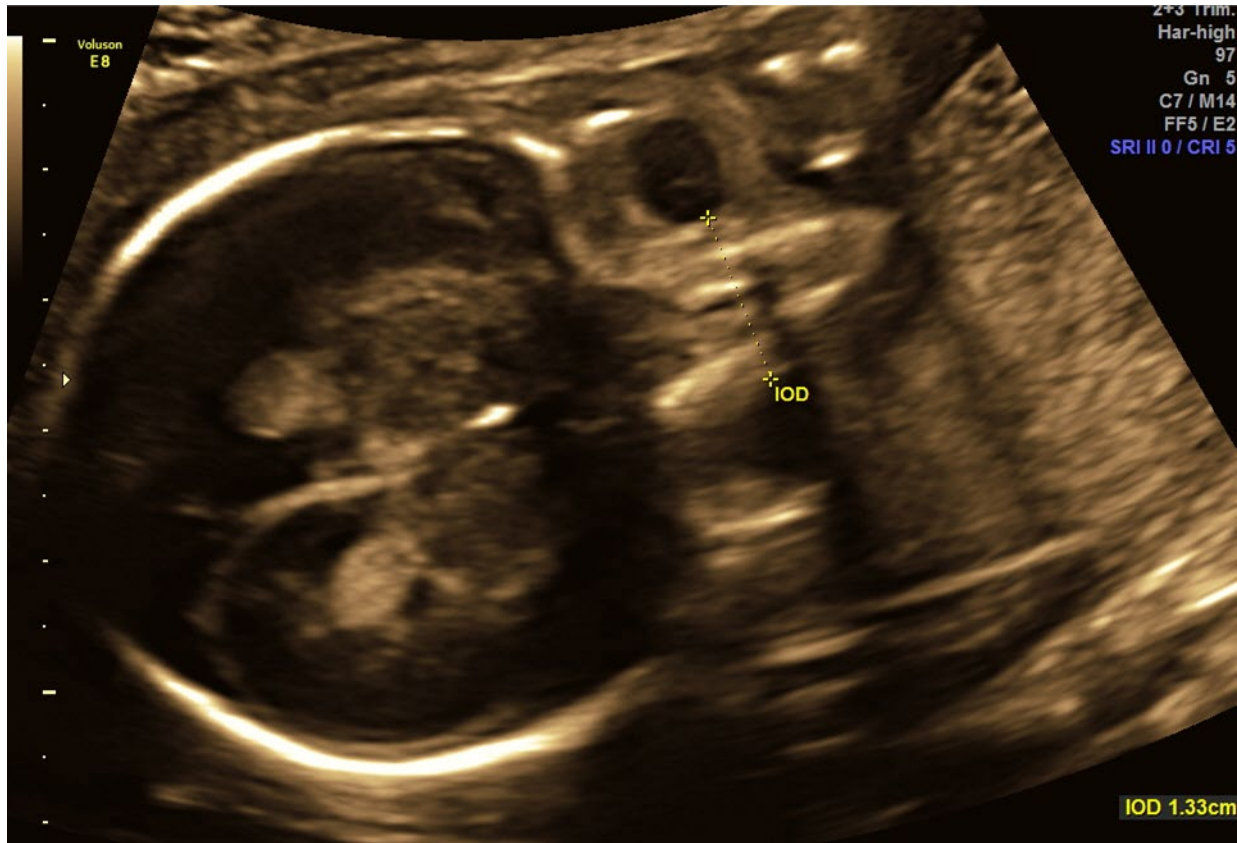
Neck continued examples



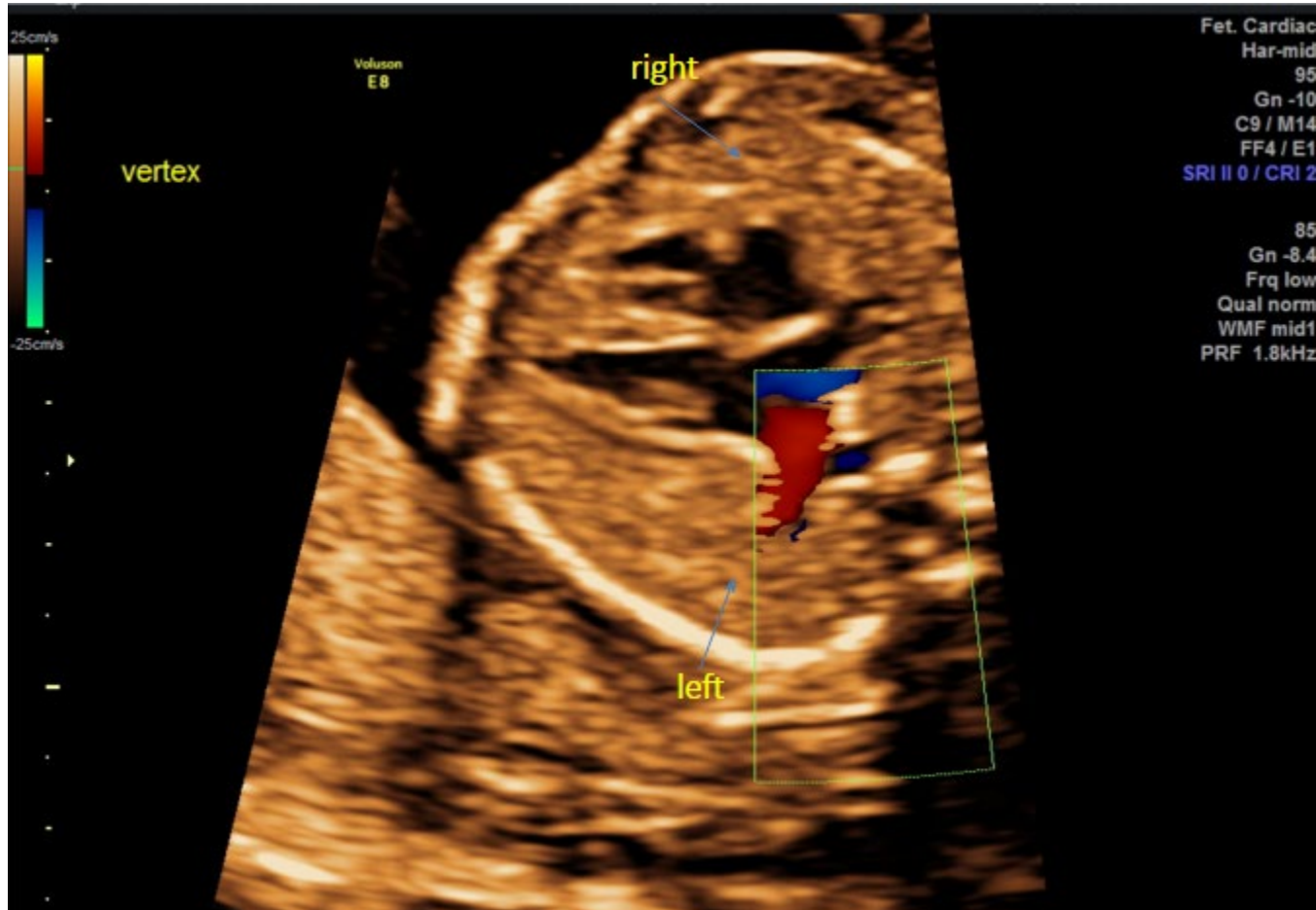
Biometry of orbits- outer to outer



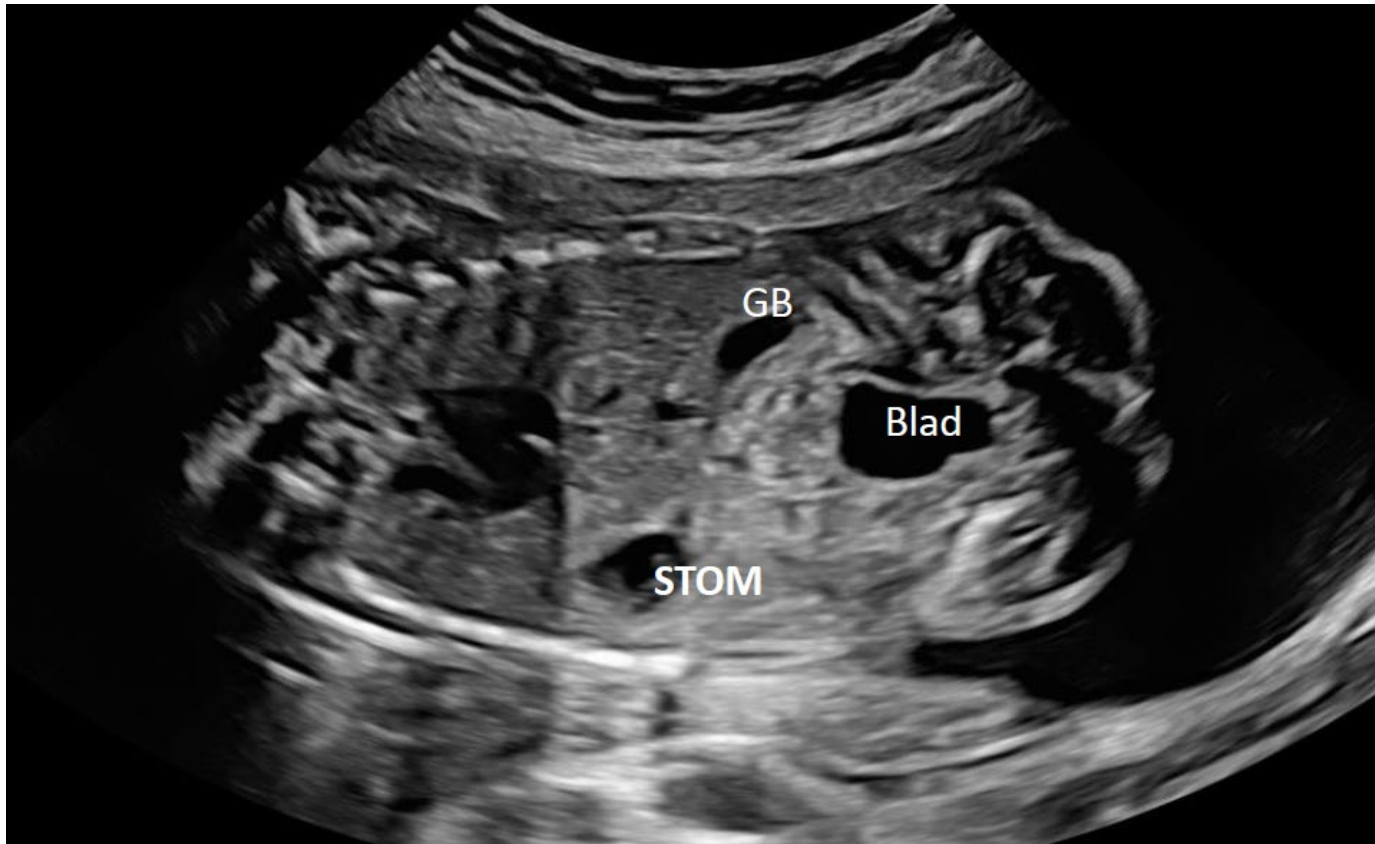
Biometry of orbits- inner to inner



Lungs



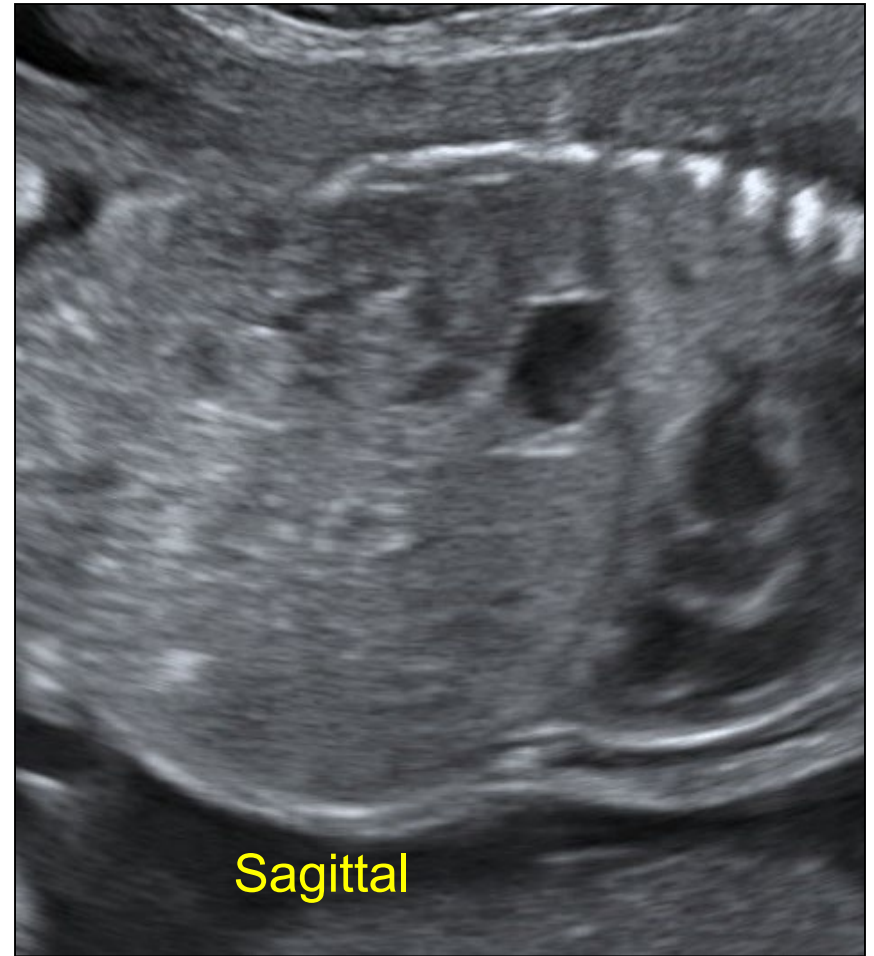
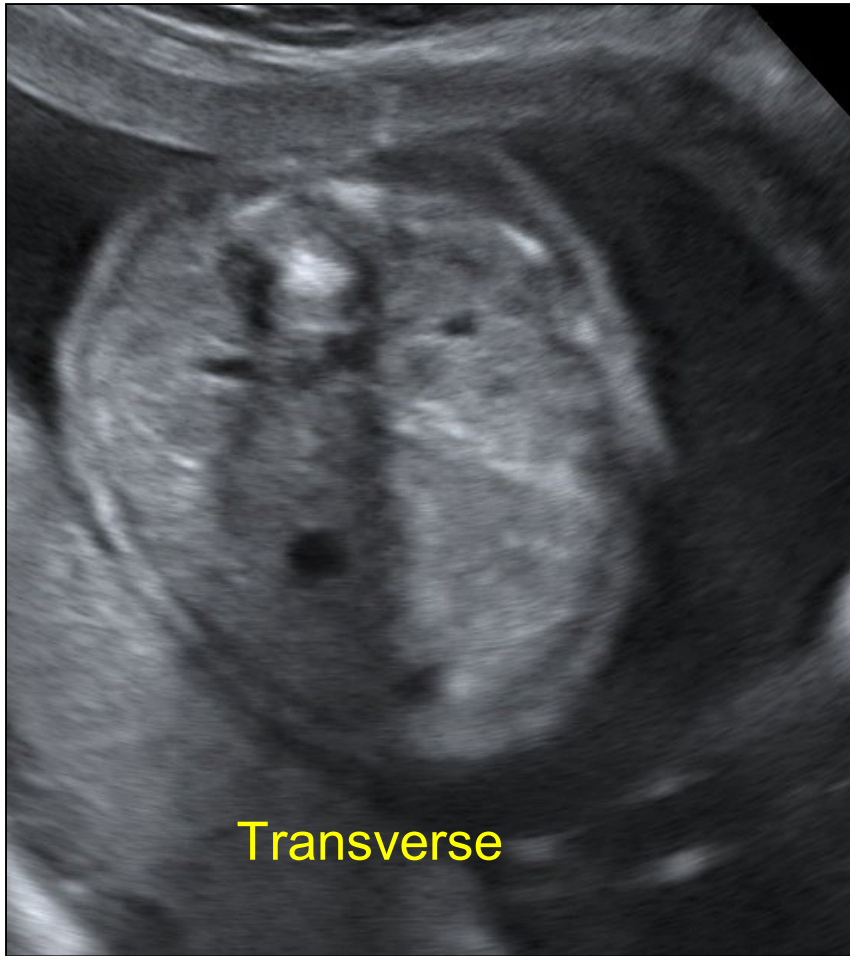
Diaphragm



Another Diaphragm example



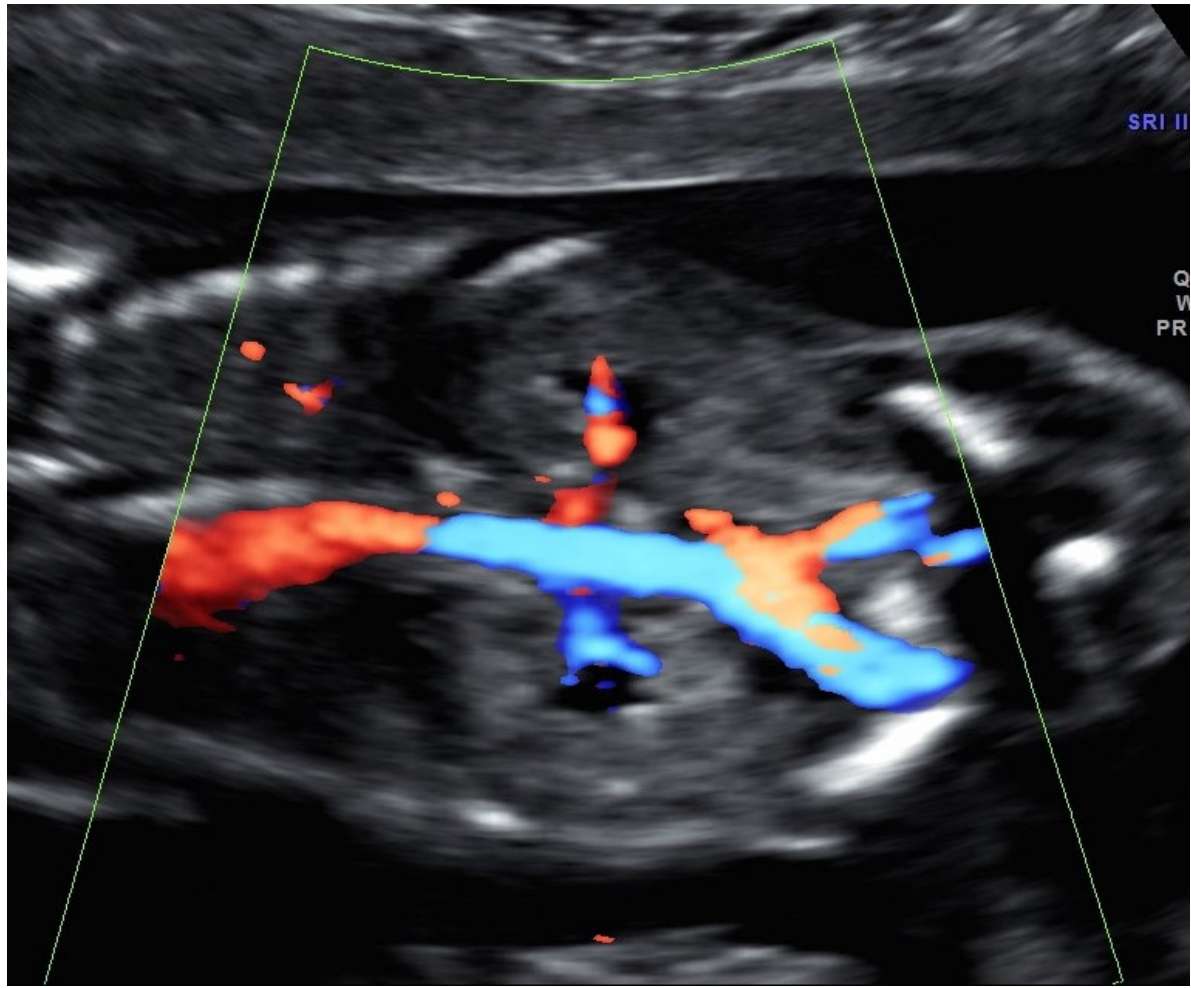
Kidneys



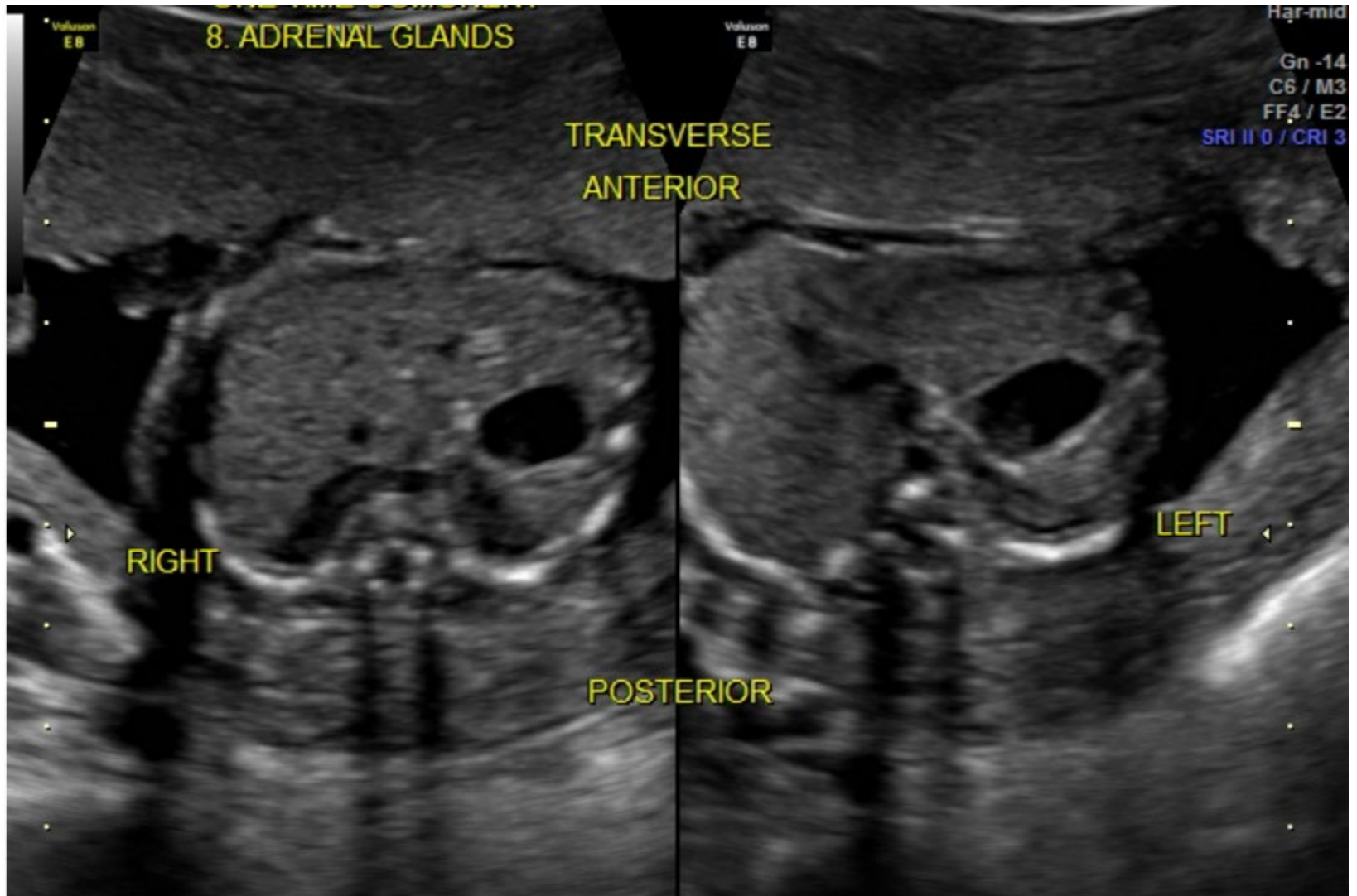
Kidneys continued examples



Kidneys- with renal arteries



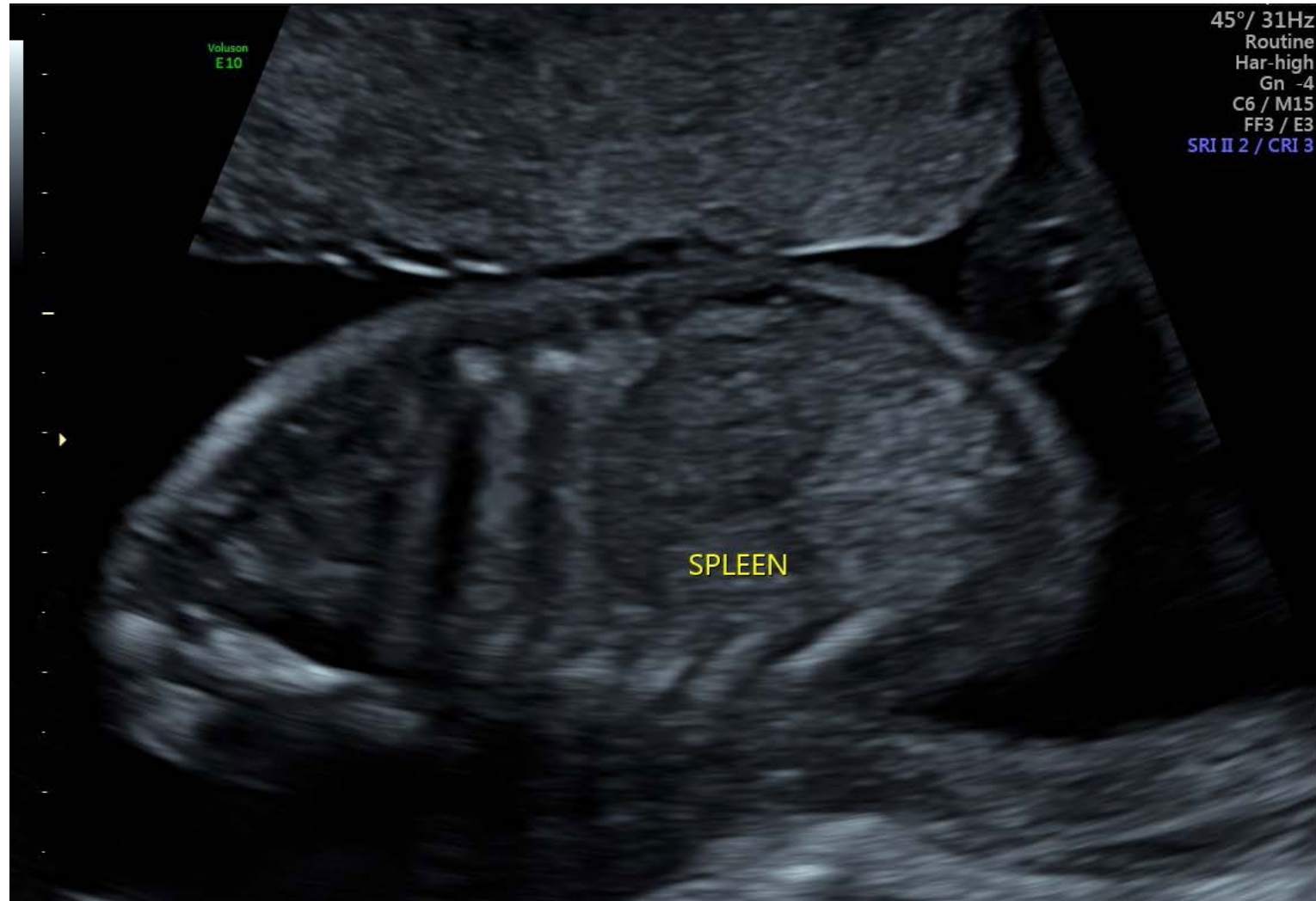
Adrenals



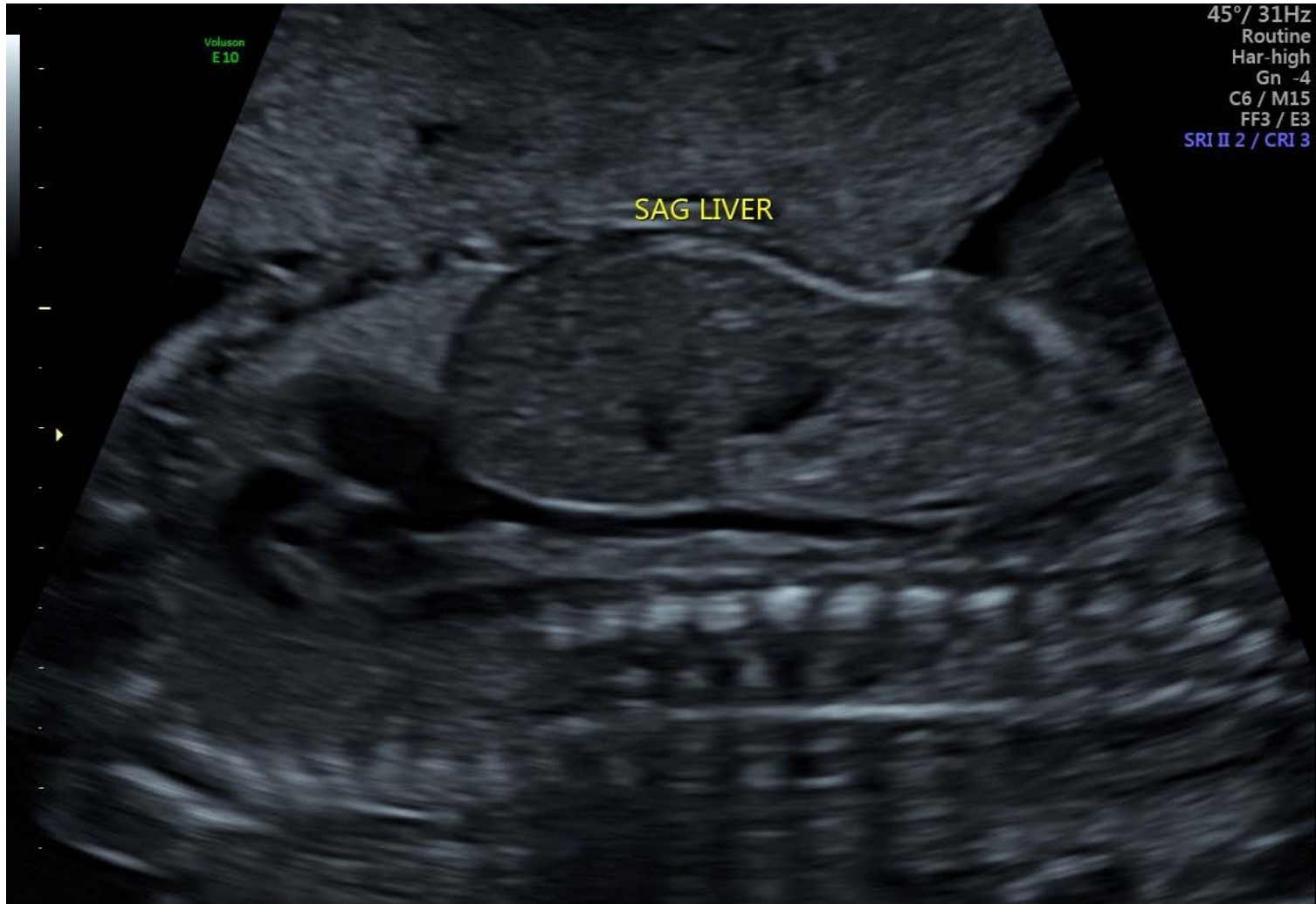
Adrenal continued example



Spleen



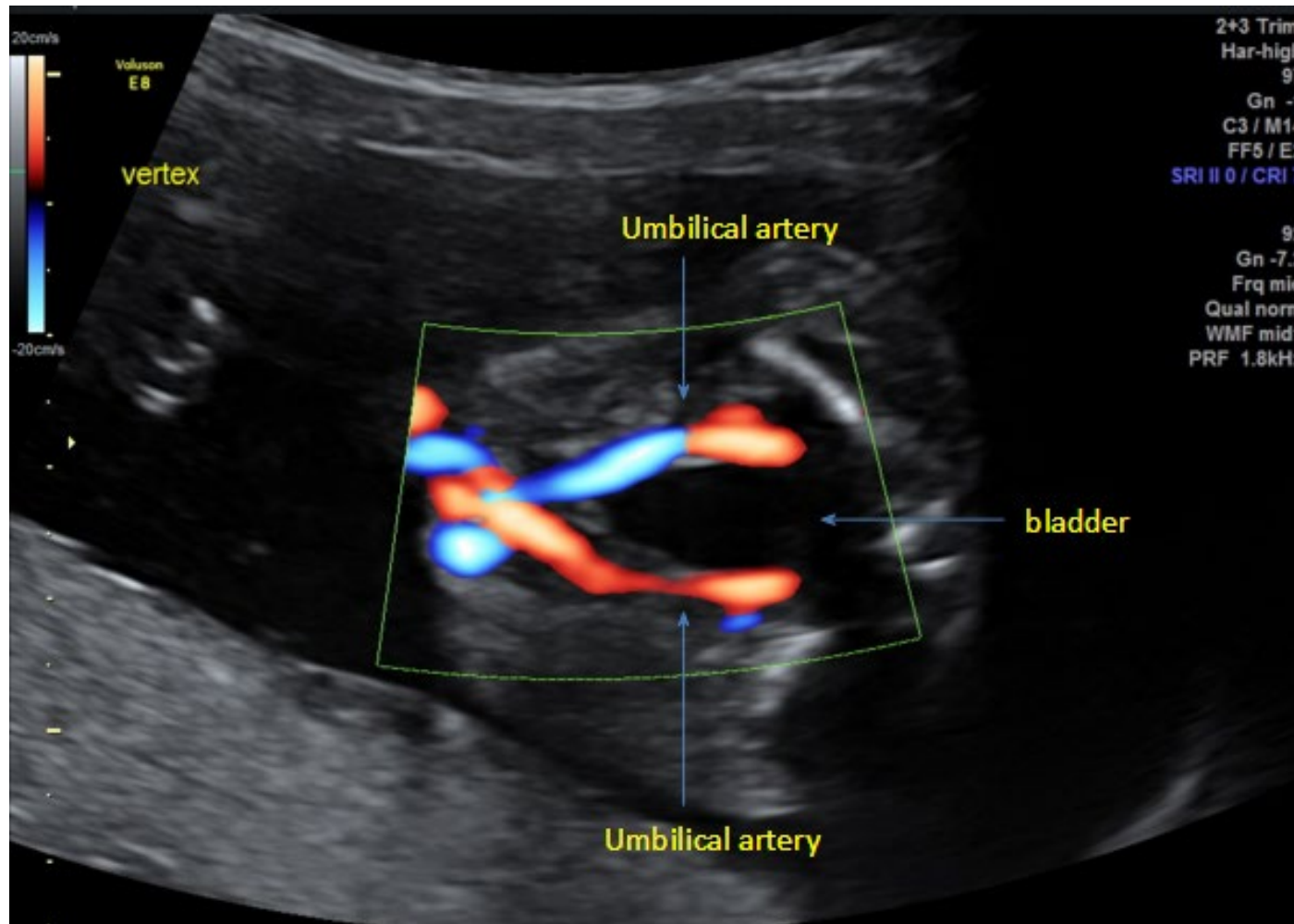
Liver



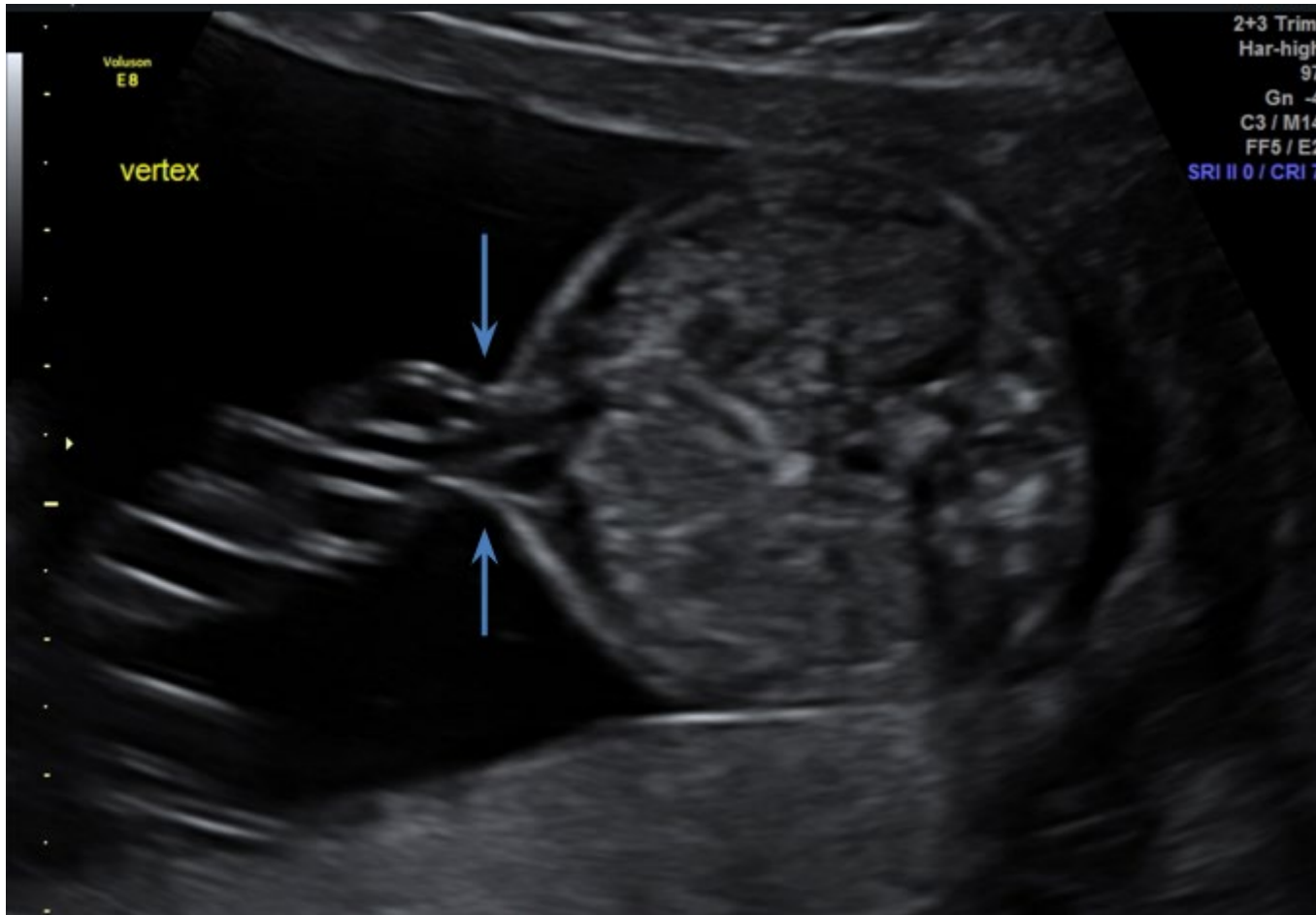
Liver, Umbilical Vein and Stomach



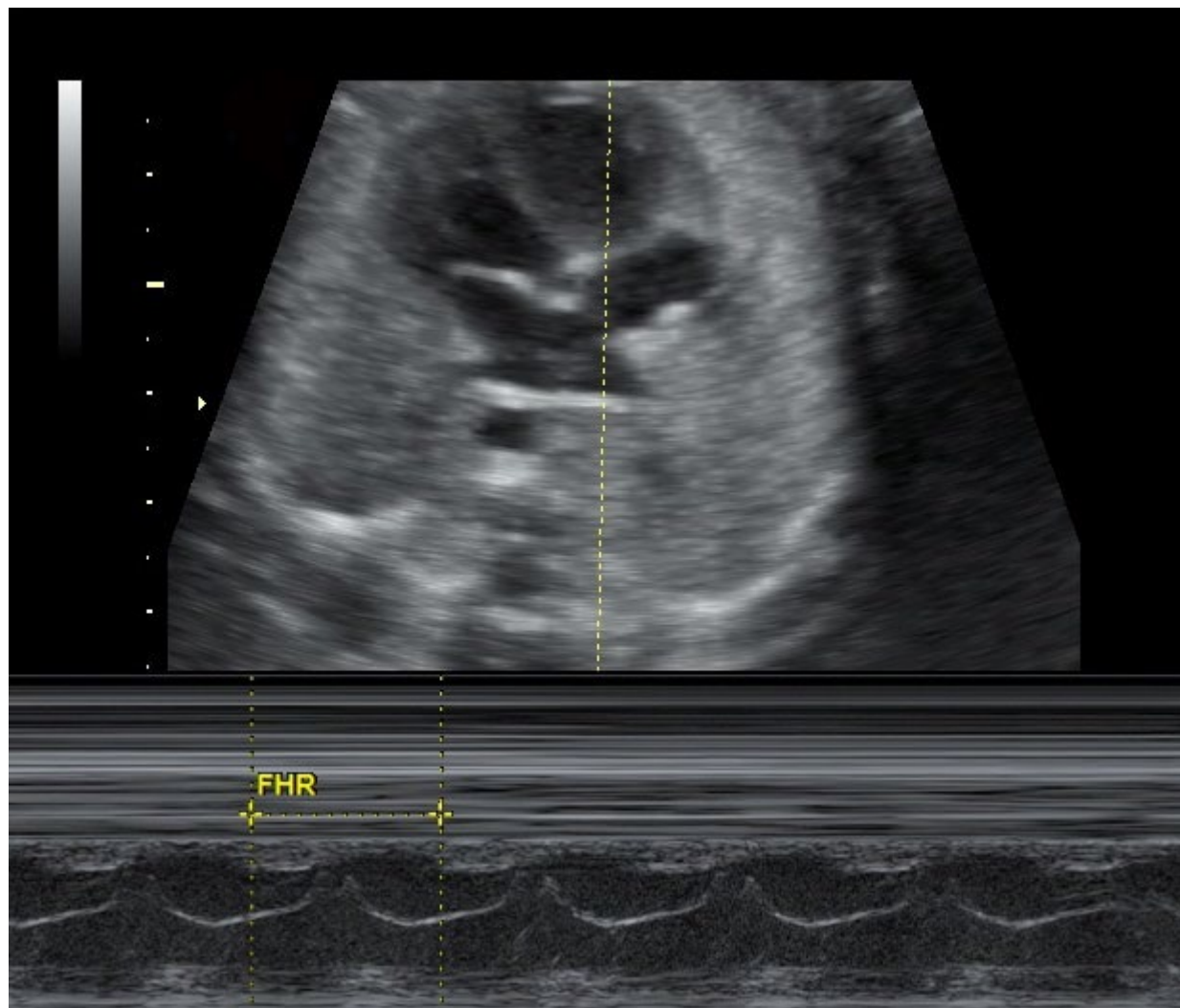
Bladder, 3VC



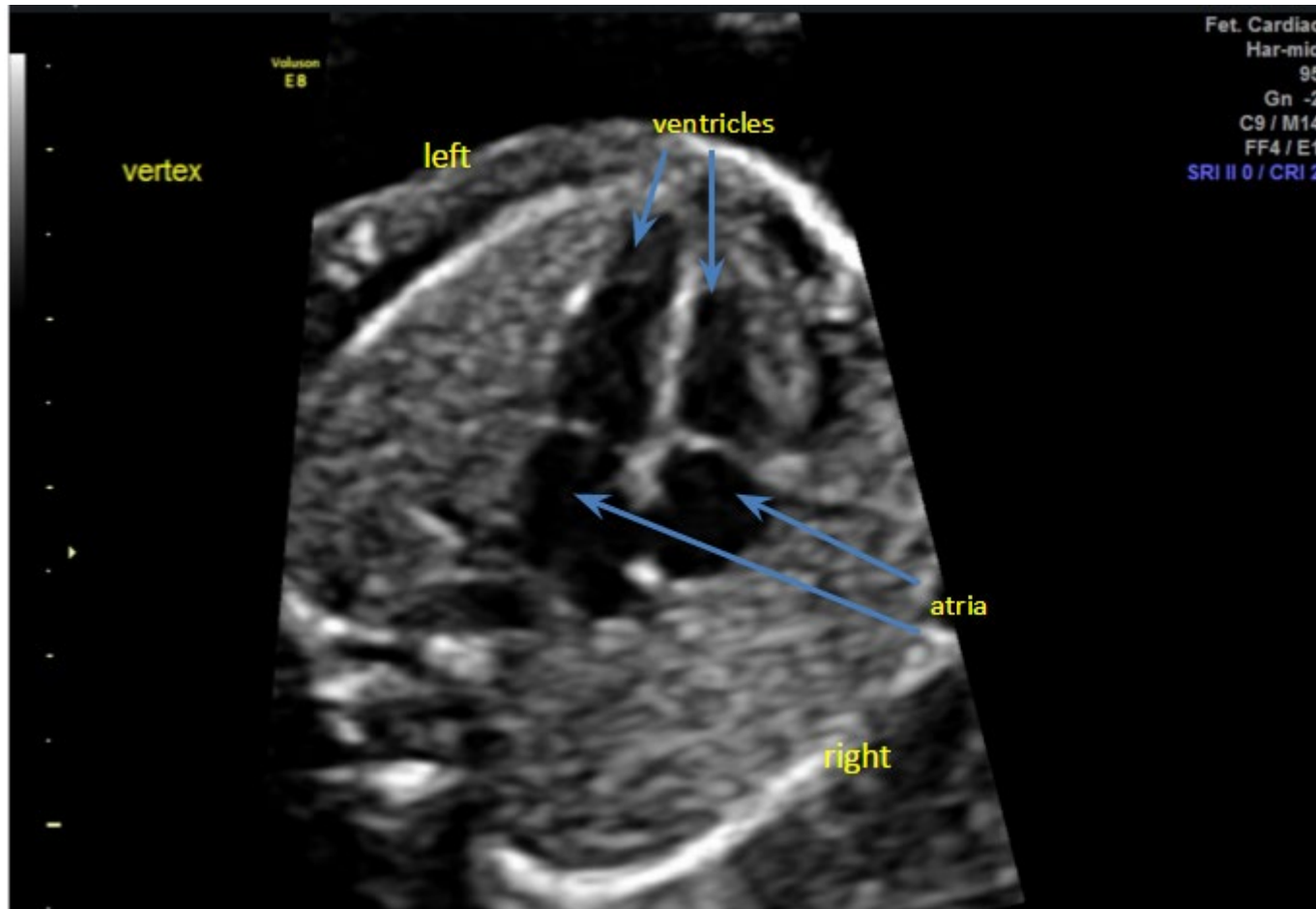
Abdominal Cord Insertion



FHR M-mode



4 Chamber heart



4 Chamber heart



Ductal Arch View



RVOT short axis



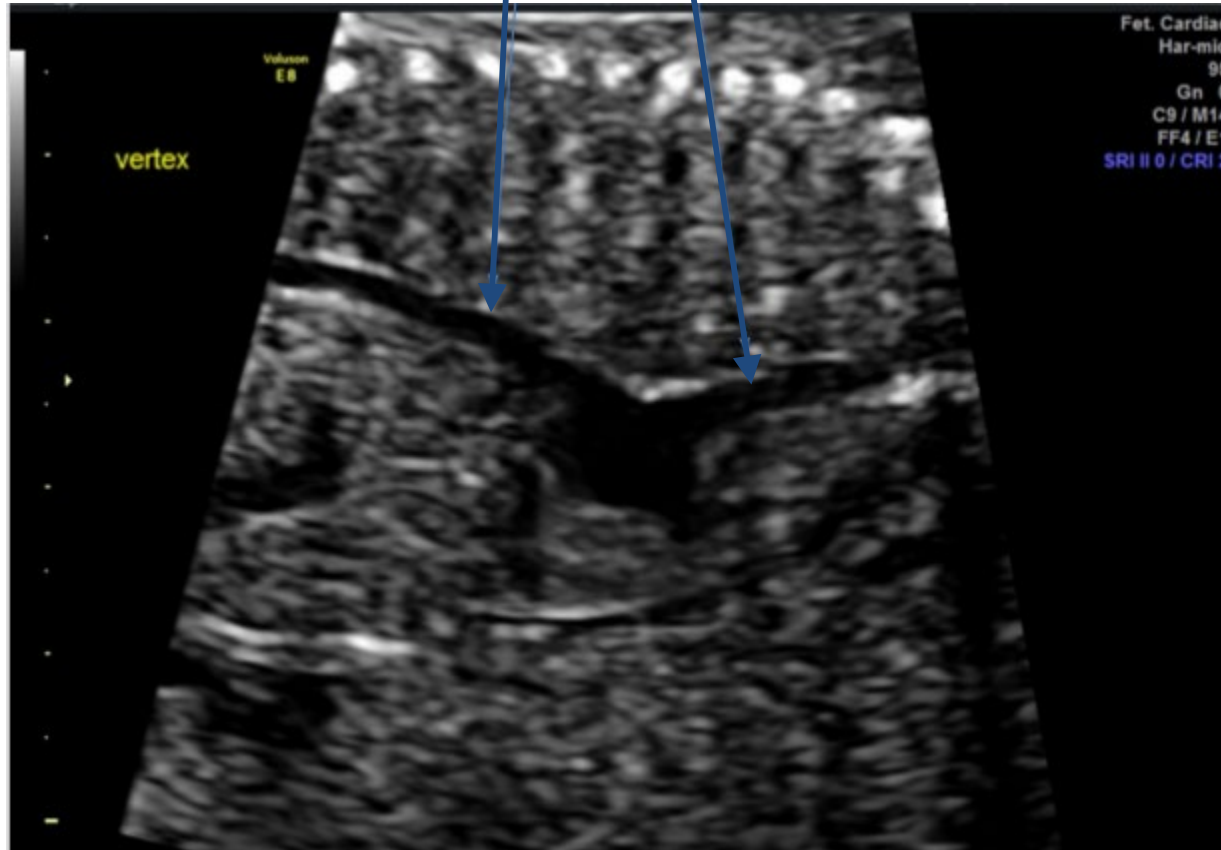
LVOT



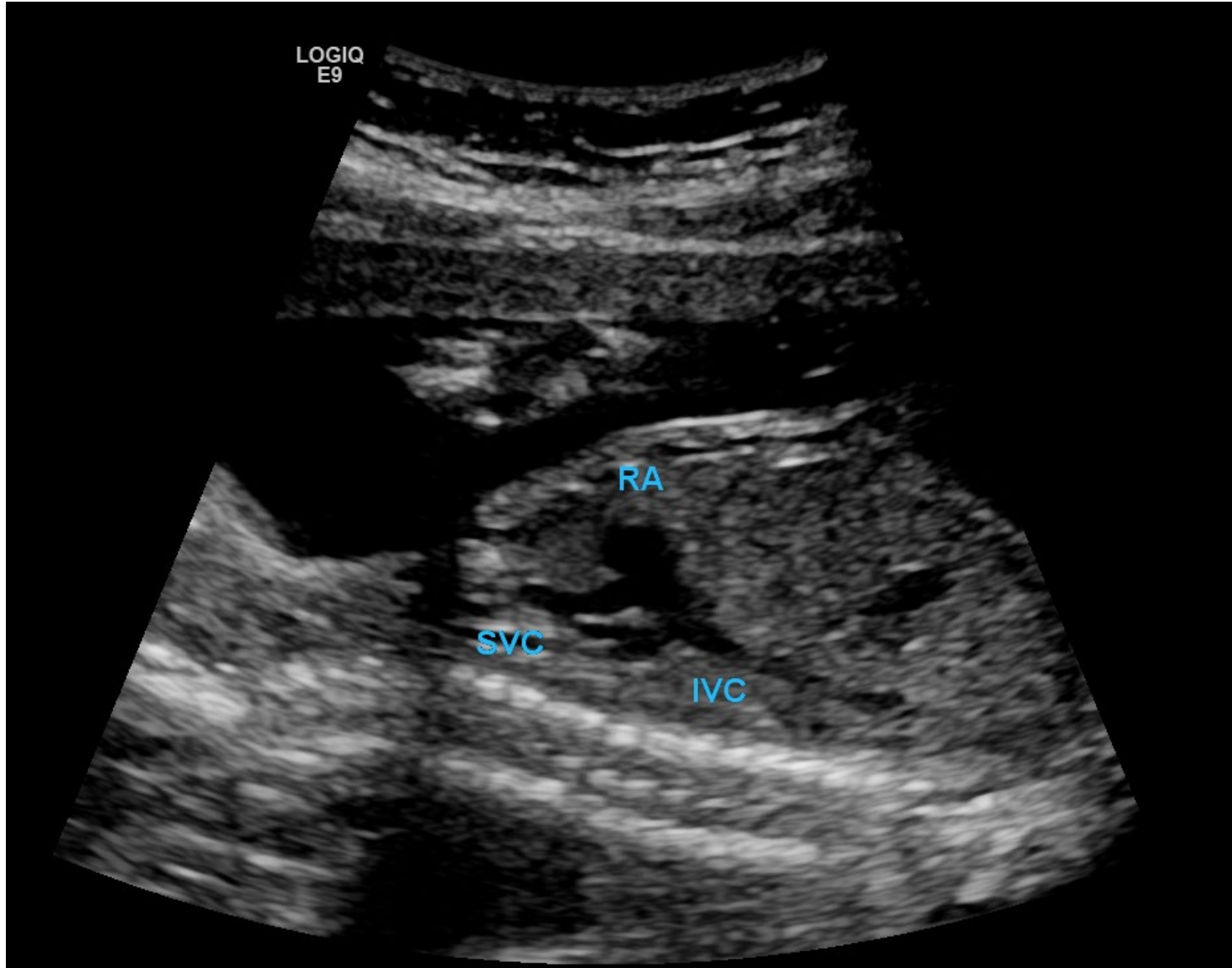
Aortic arch



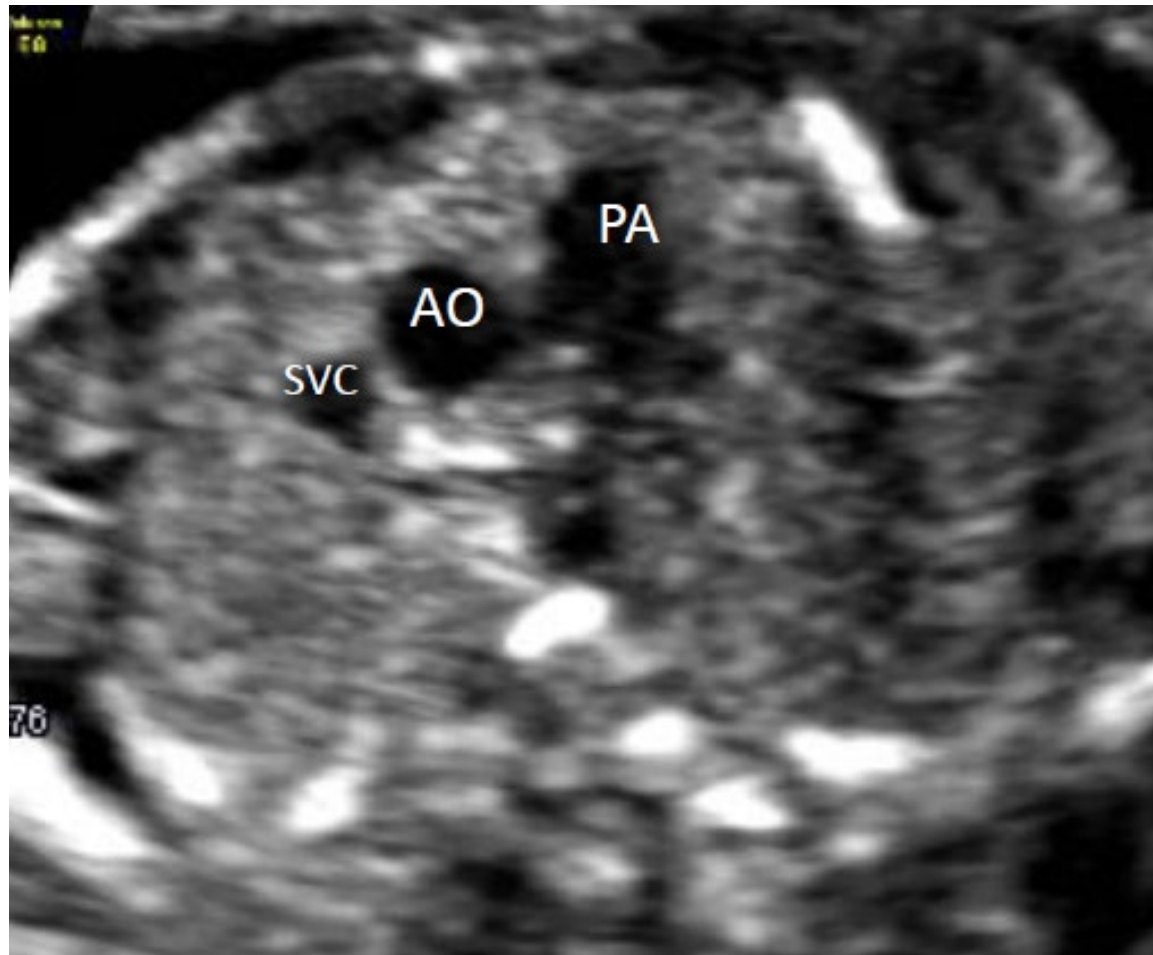
IVC/SVC



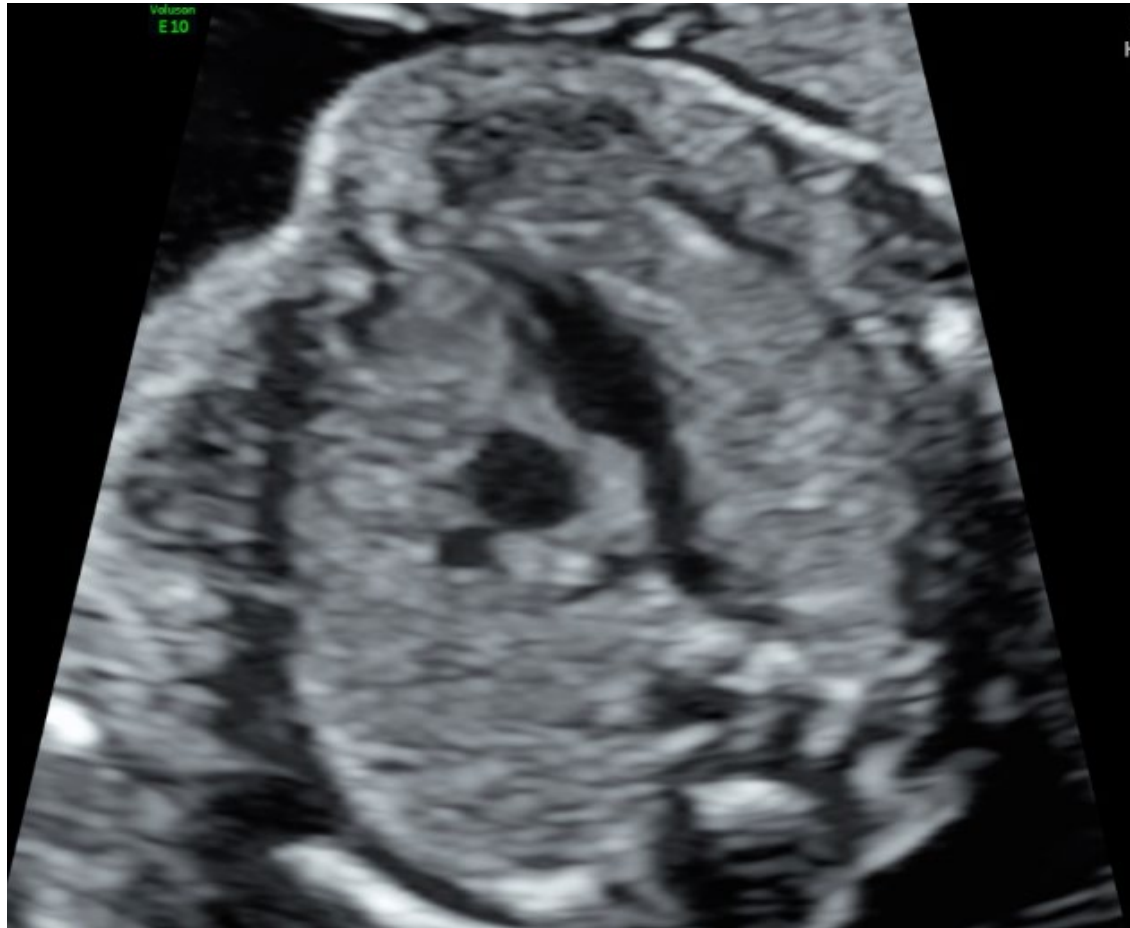
Another example IVC/SVC



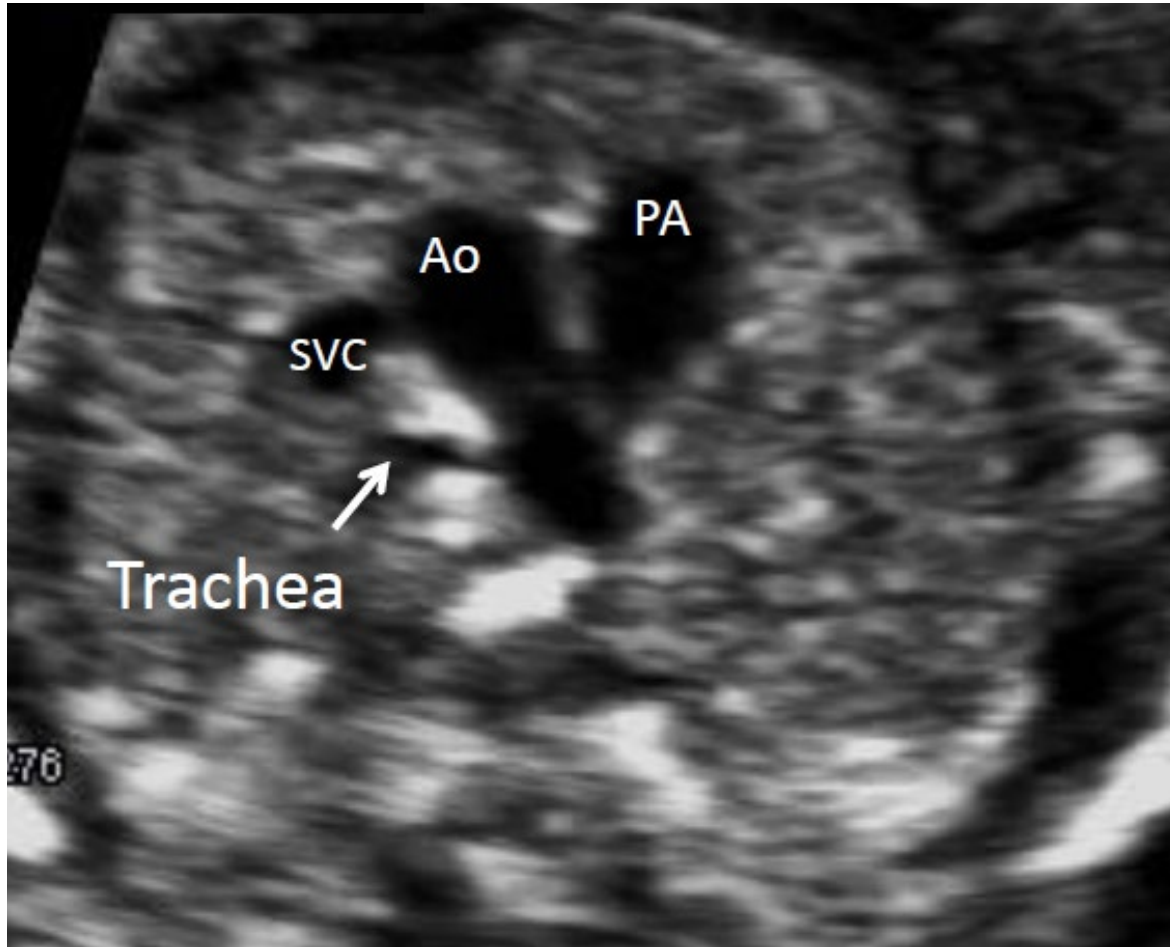
3VV



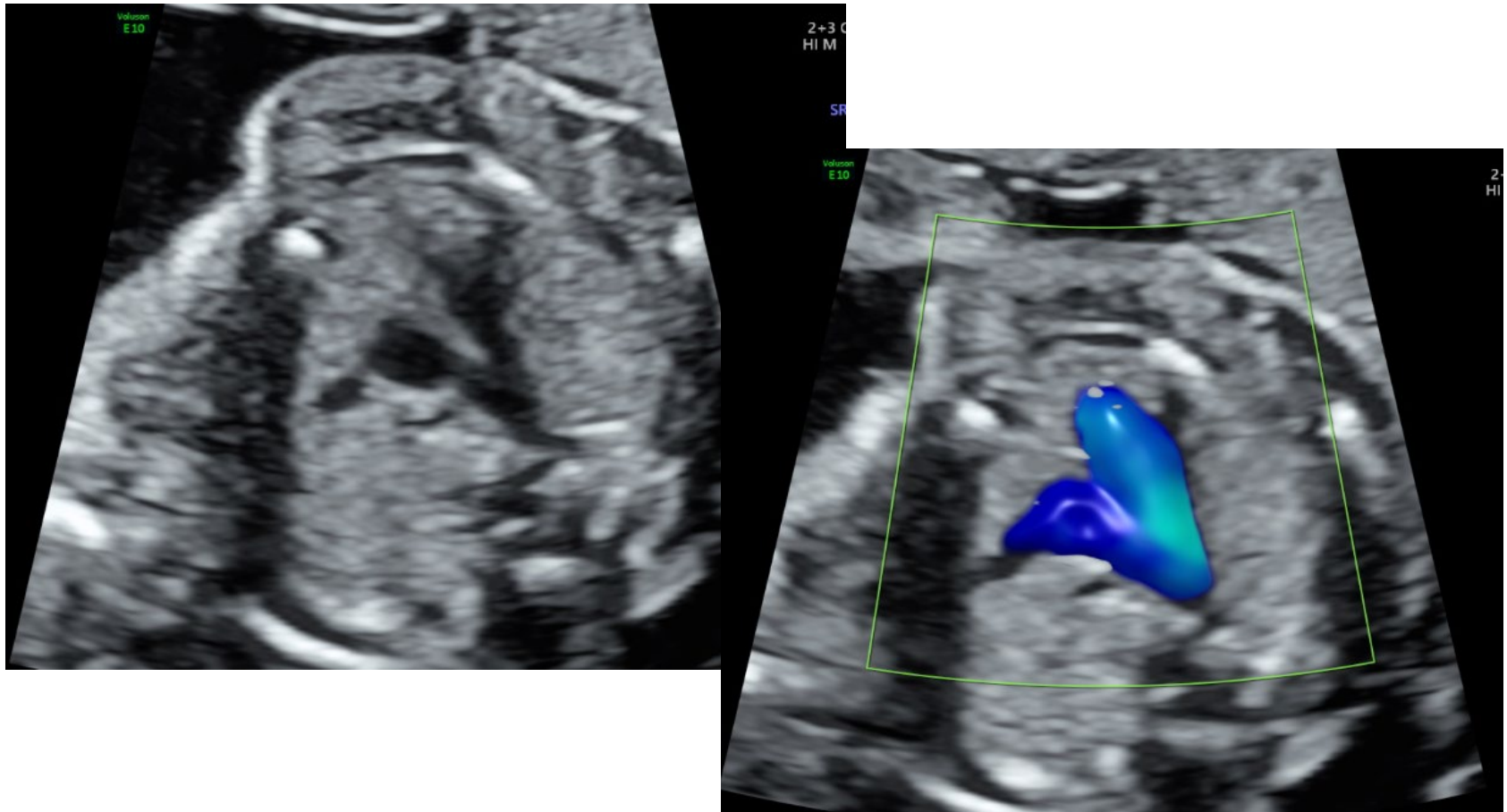
Another example 3VV



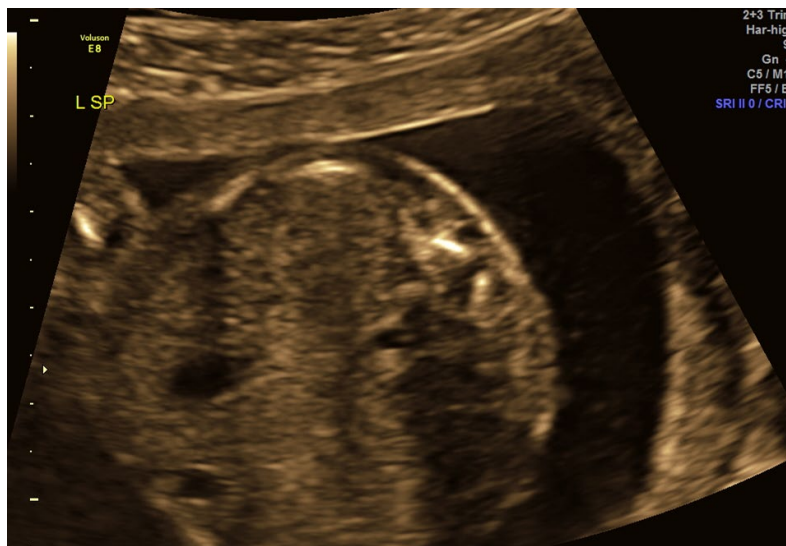
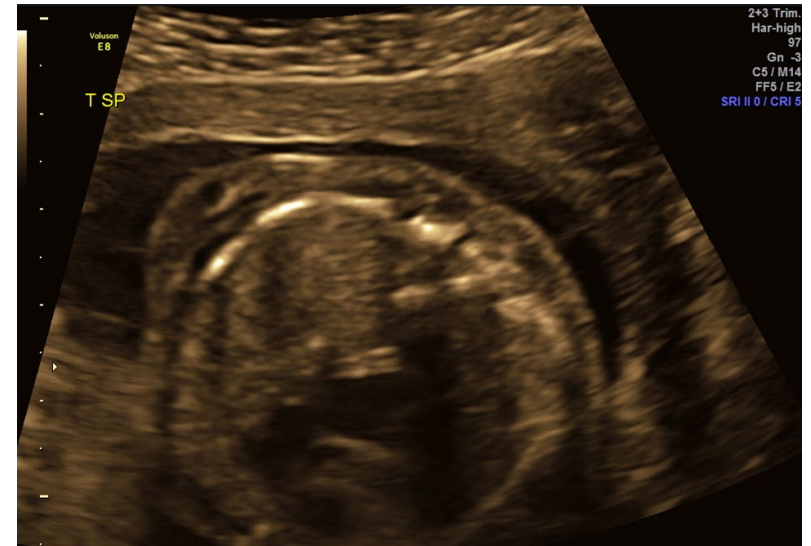
3V trachea view

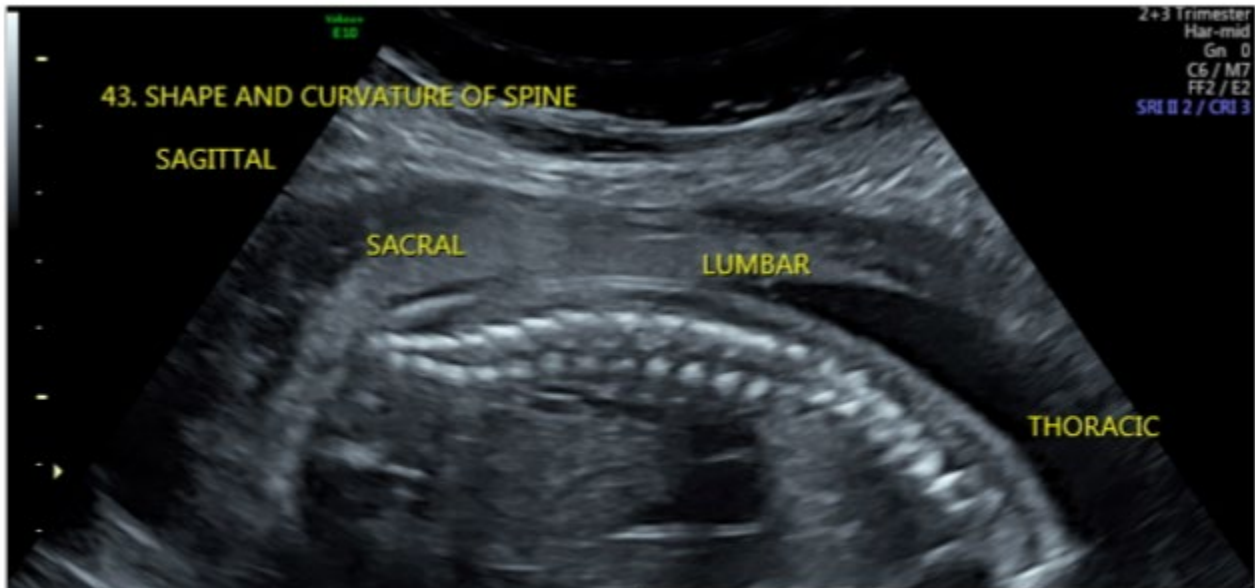


Another example 3V trachea view

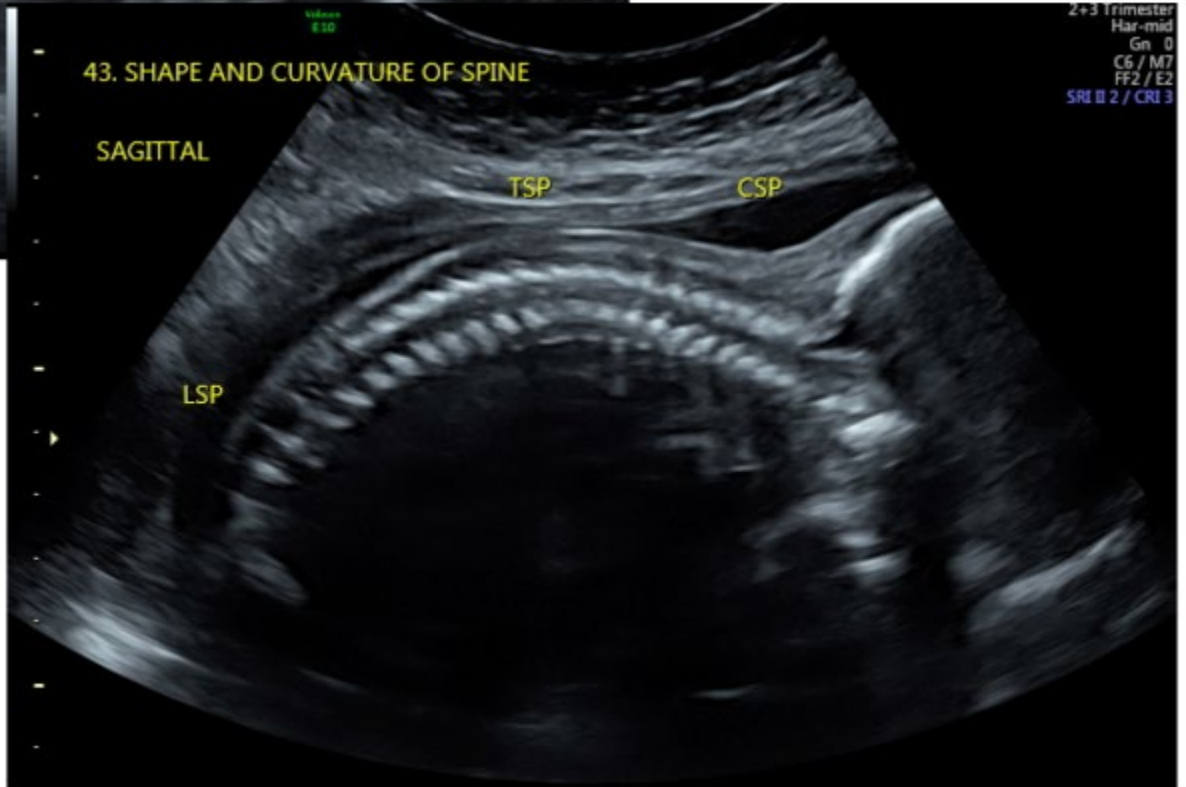


Transverse spine





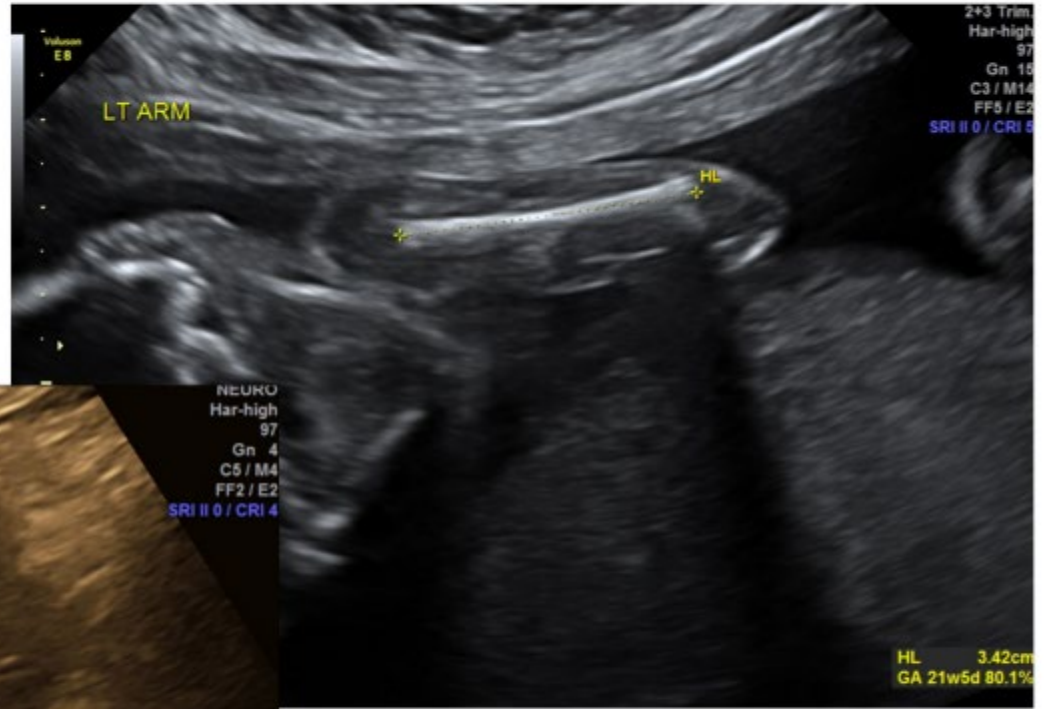
Long Spine



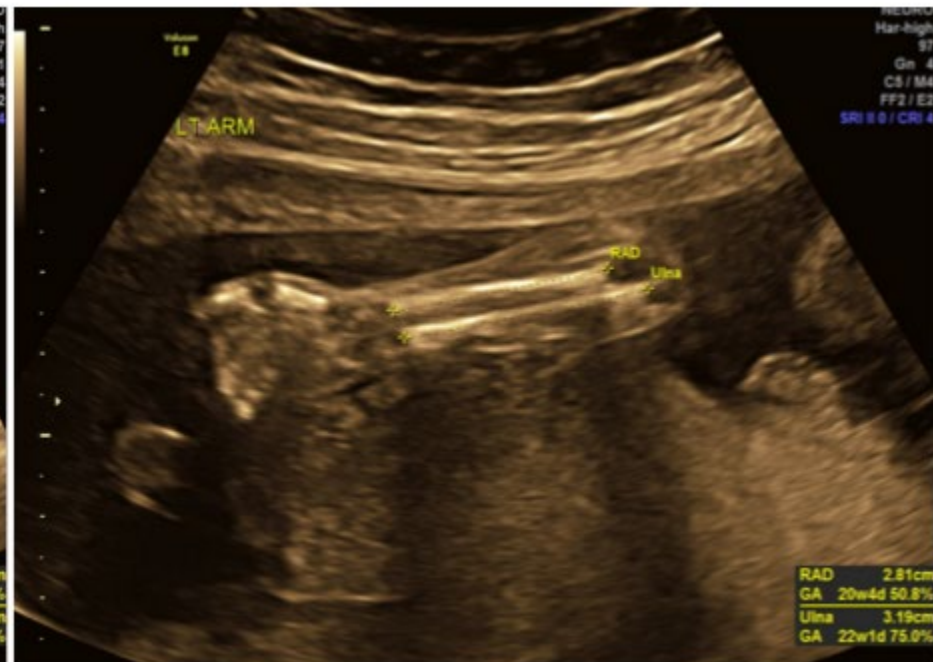
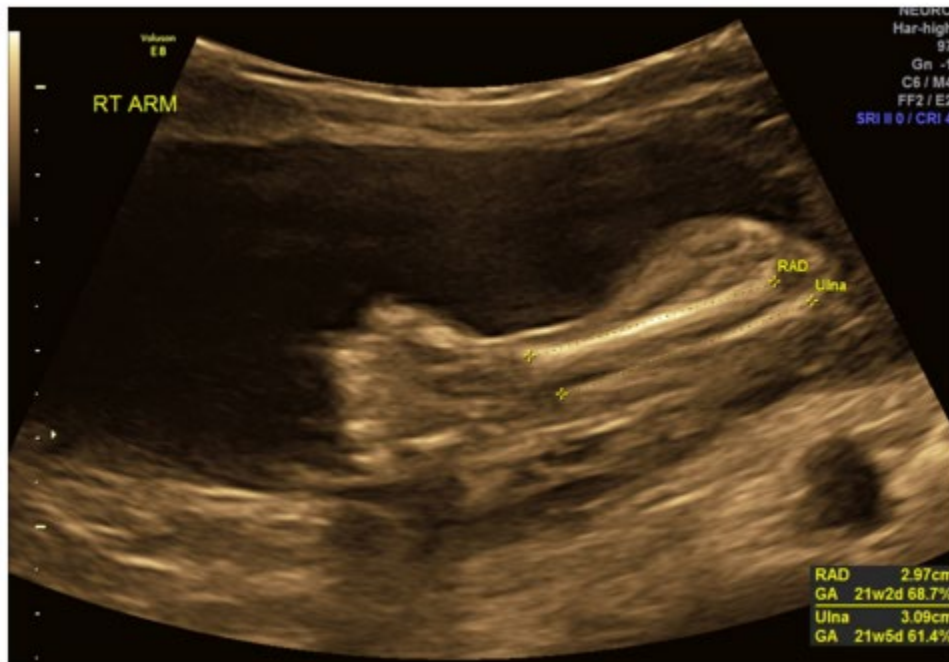
Example coronal lower spine



Humerus

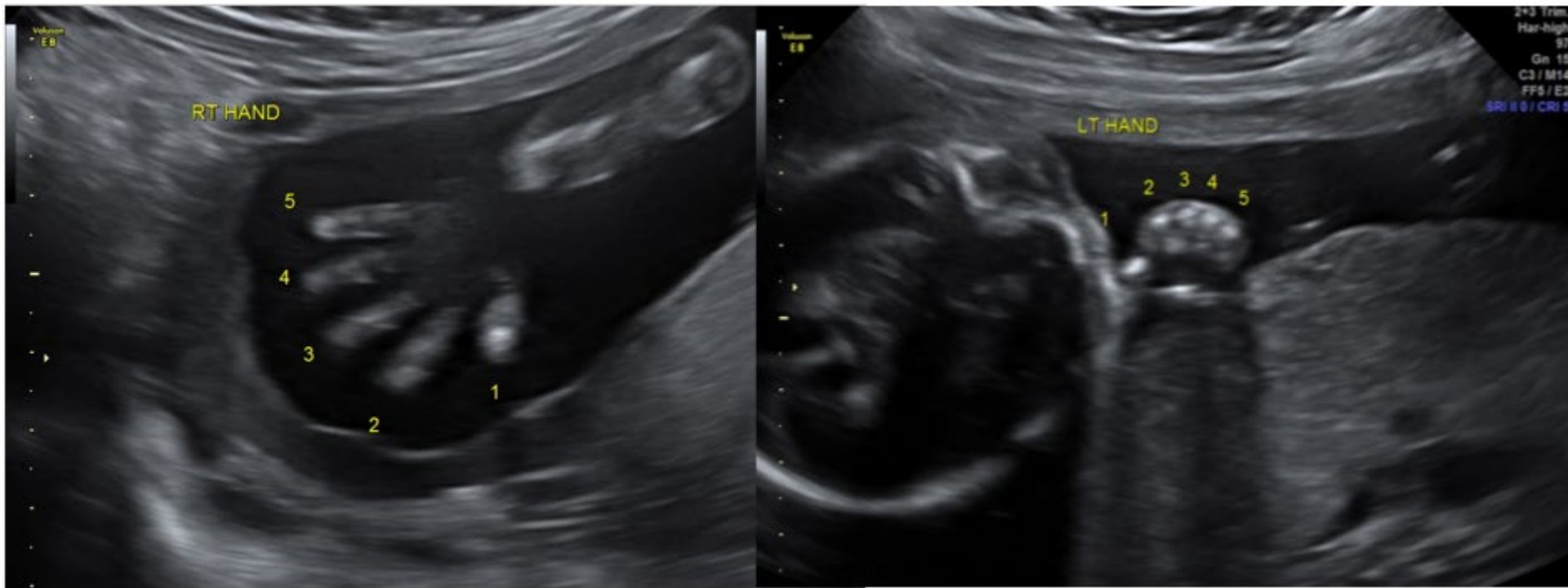


Radius/ulna



Hands/digits

numbering is not required

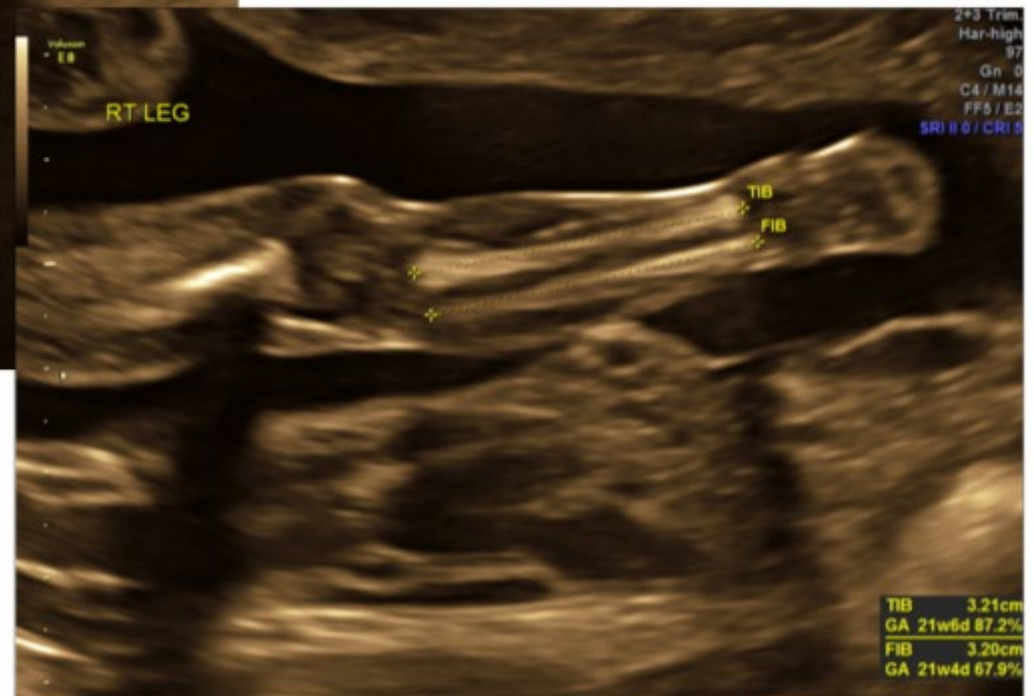


Lower extremity

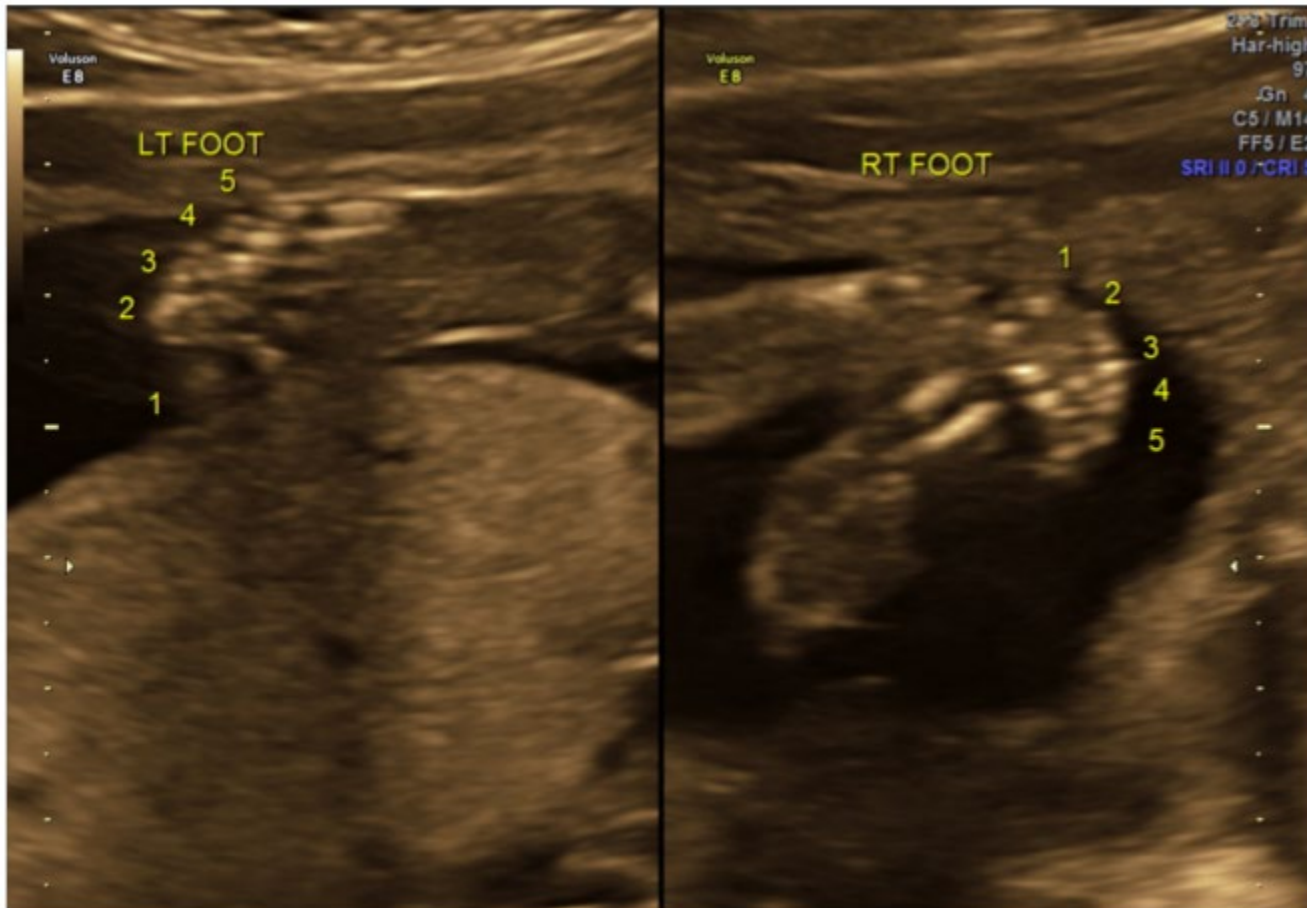
Example of Architecture - foot to lower leg



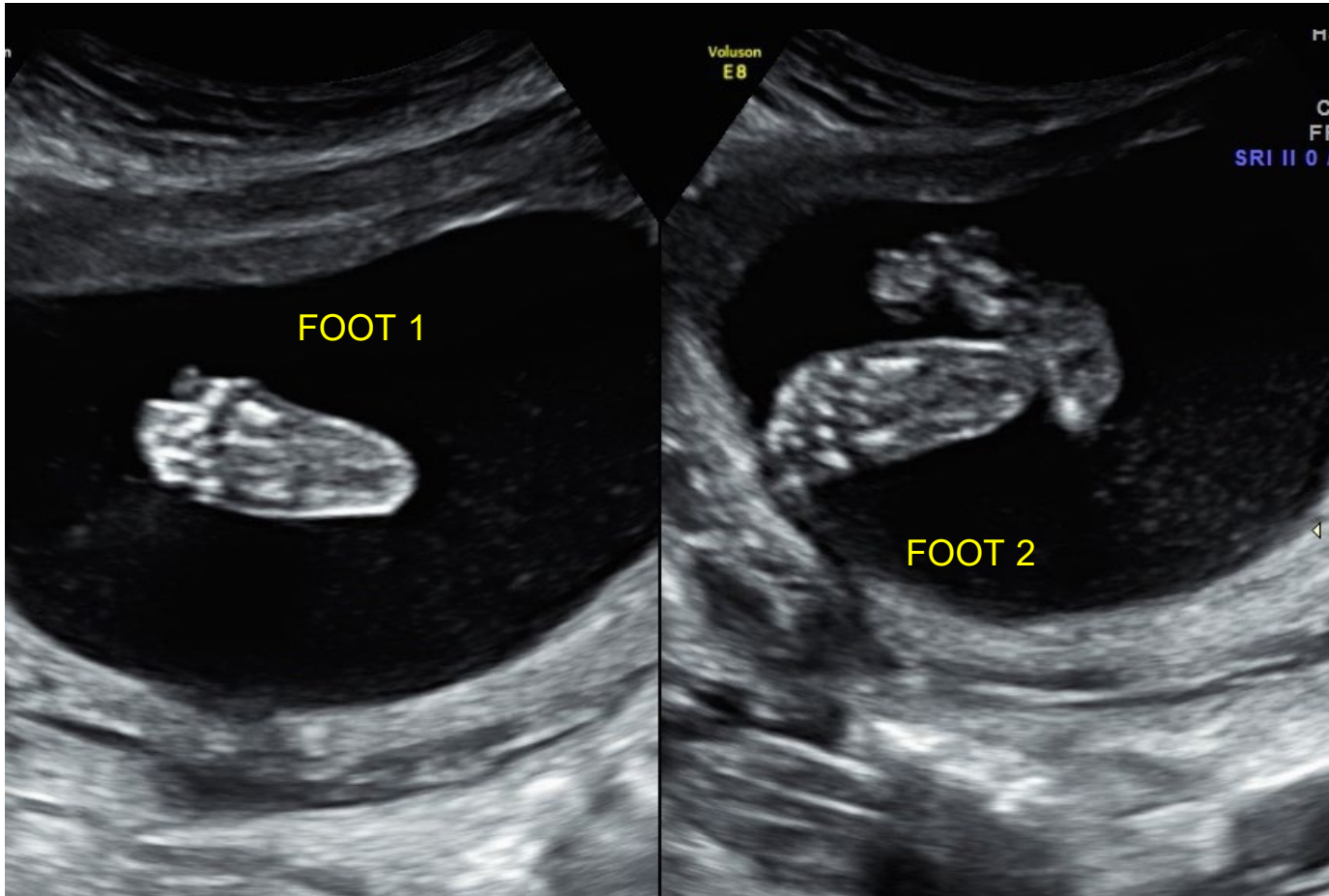
Tibia/fibula



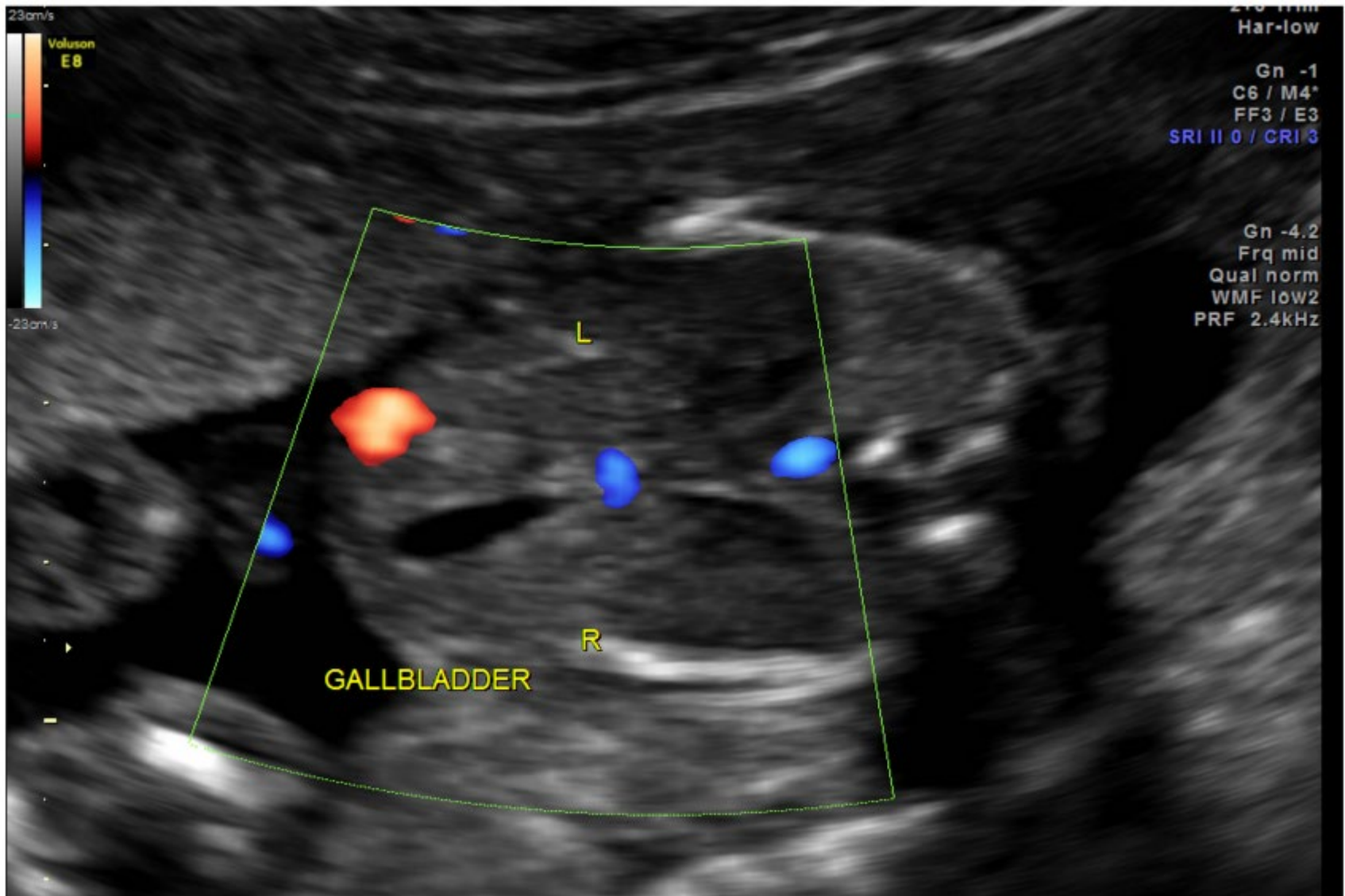
Feet/toes



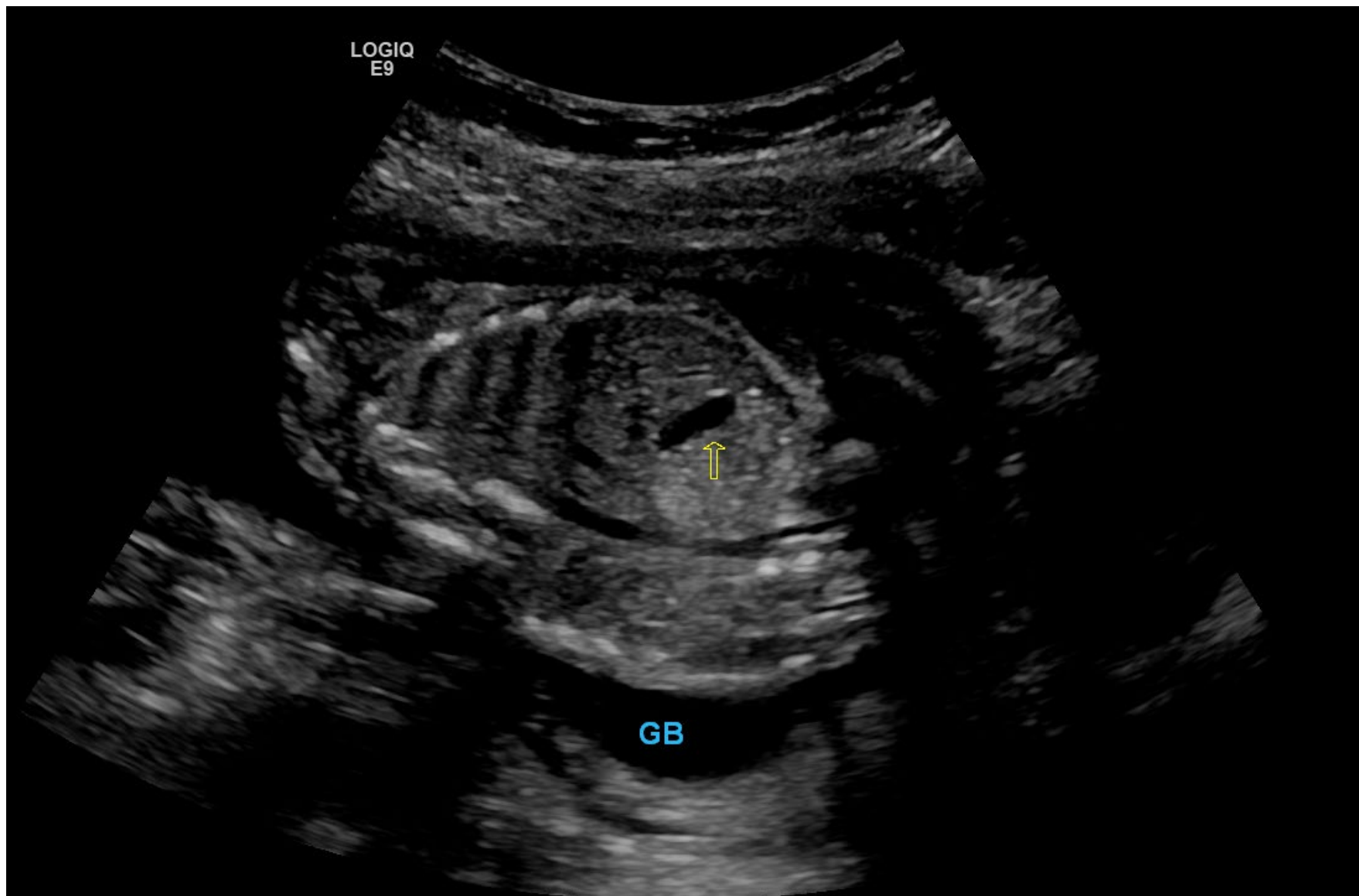
Feet/toes



Gallbladder



Gallbladder



Fetal Sex/Female



Fetal Sex/Male

